

# WDPA Data Status Report

## Ethiopia

January 2015

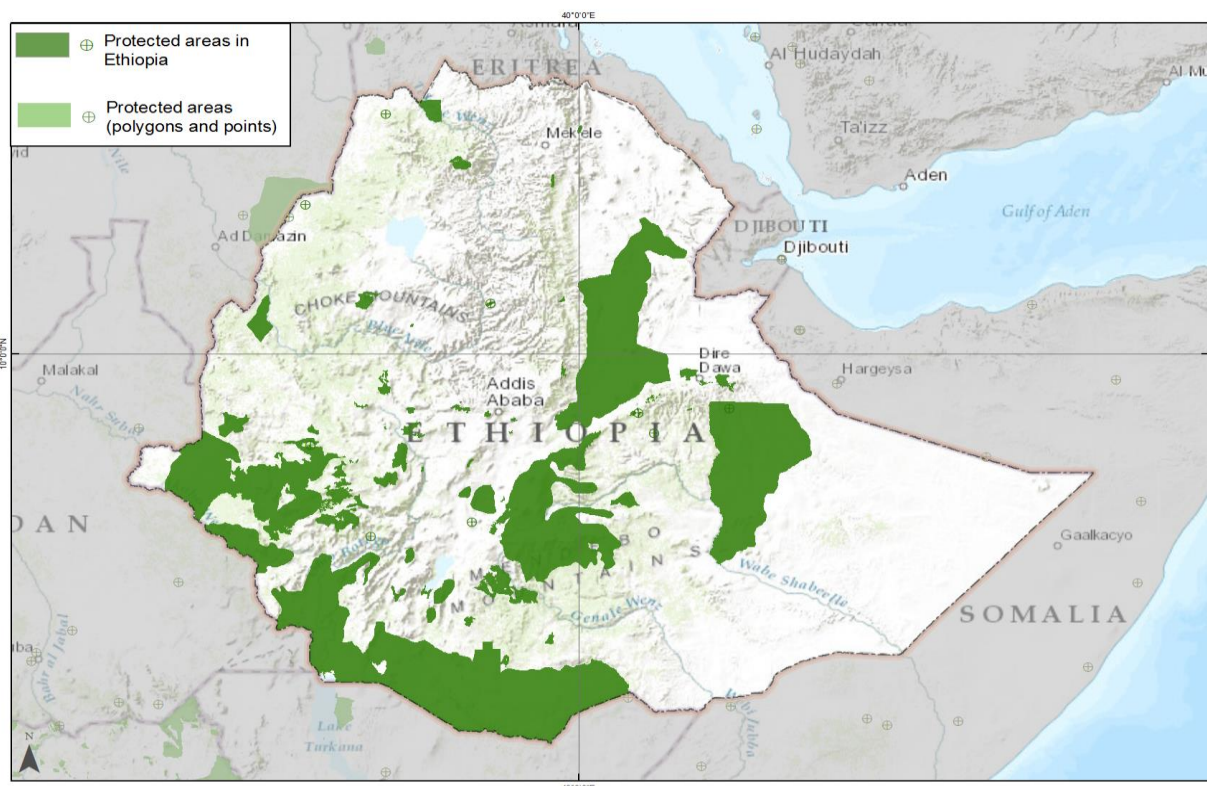
### About this Report and the World Database on Protected Areas (WDPA)

The WDPA is the most comprehensive global dataset on terrestrial and marine protected areas, incorporating the official UN List of Protected Areas. The WDPA dataset is not necessarily a complete representation of all the protected areas which have been designated in country. The quality of the WDPA depends on the accessibility of accurate, comprehensive, up-to-date protected areas information from data holders.

This report describes the current status of data in the WDPA for all sites included in the January 2015 monthly release for Ethiopia. The WDPA is updated each month, and the information in this factsheet may have been superseded by a more recent update.

This fact sheet has been produced with support from the 10th European Development Fund through the BIOPAMA (Biodiversity and Protected Areas Management) Programme. The contents of this publication are the sole responsibility of UNEP-WCMC and can in no way be taken to reflect the views of the European Union nor of the ACP Secretariat.

### Map showing protected areas in the WDPA



*The boundaries and names shown, and the designations used on this map do not imply official endorsement or acceptance by the United Nations.*

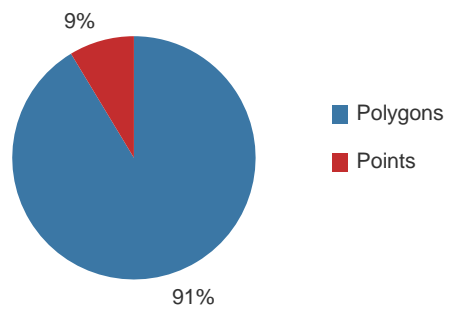
## Protected areas data in the WDPA for Ethiopia

There are 104 protected area records stored in the WDPA for Ethiopia, 101 are national-level protected areas with 3 designated under international and regional agreements or conventions.

91% of the data have boundaries in polygon format, with the remaining 9% depicted in point format (i.e. a single latitude and longitude point for the protected area). See Figure 1.

Of the 104 protected areas, none contain a marine a component.

Figure 1: Ratio of points to polygons

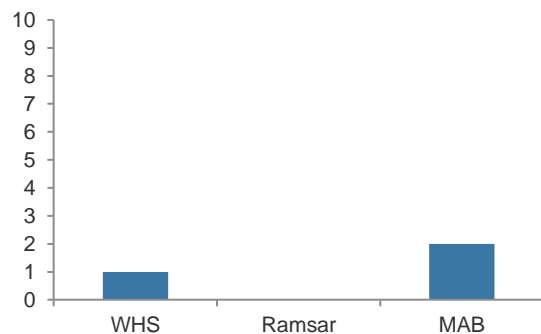


### Data for protected areas designated under international conventions and agreements

There are 3 protected areas in the WDPA designated under international or regional conventions or agreements.

1 is a World Heritage Site (WHS); 2 are UNESCO Man and the Biosphere Reserves (MAB). See Figure 2.

Figure 2: Number of WHS, Ramsar and MAB sites

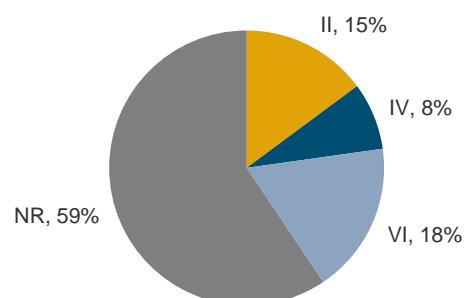


### Data for national-level protected areas

There are 101 national-level protected area records in the WDPA. IUCN Management Categories have been reported for 41 of these records. The remaining 60 are recorded as Not Reported.

Figure 3 shows the allocation of IUCN Management Categories across national-level protected area records in the WDPA (numbers of sites in each category are shown in Table 2 at the end of this report).

Figure 3: National-level protected areas by IUCN Management Category



## Completeness of WDPa Data Attributes for Ethiopia

The WDPa requires that a minimum set of information is provided with each protected area record. These data attributes are defined by the WDPa Data Standard.

Table 1 shows the extent to which key attributes have been reported by data providers for all protected area records in the WDPa for Ethiopia.

Table 1: Completeness of selected attributes

Attribute	Completeness
IUCN Category	42%
Status (designated or proposed)	100%
Status Year	44%
Governance Type	0%
Management Authority	0%
Link to Management Plan	0%

The WDPa Data Standard can be accessed at <http://www.unep-wcmc.org/resources-and-data>.

## Data sources in the WDPa for Ethiopia

Data in the WDPa have been obtained or validated from 6 sources for Ethiopia.

Figure 4 shows the breakdown of when protected area records in the WDPa were last updated or validated.

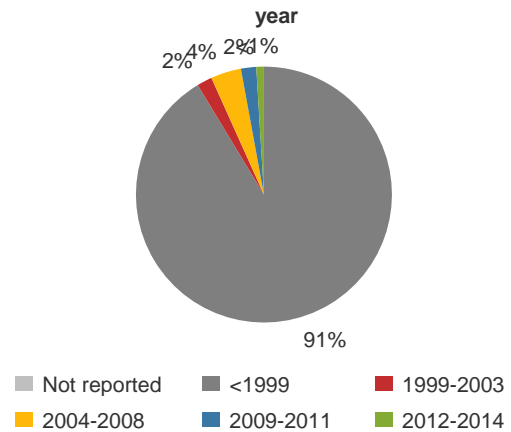
Data for protected areas designated under international agreements and conventions have been sourced from the relevant convention secretariat. This includes: UNESCO World Heritage Centre, Ramsar Convention Secretariat and UNESCO Man and The Biosphere Programme.

Data for national-level protected areas in the WDPa have been sourced from national authorities wherever possible. Information may also be supplemented by data from other agencies or organisations working in each country. As part of the update process for national data, national authorities are given the opportunity to review, validate and, where necessary, edit all existing WDPa records for their country. All updates to the WDPa by national authorities take priority over other sources and are considered to be the authoritative version.

There is one record in the WDPa with no reported source for Ethiopia.

The top three sources for national-level data in Ethiopia are: State Forest Conservation and Development Department; Ethiopian Wildlife Conservation Organisation (EWCO); Head of Wildlife Conservation Department, Ministry of Agriculture and Rural Development, Federal Republic of Ethiopia.

Figure 4: Percentage of records updated or validated by year



**Table 2: WDPA Data for Ethiopia (as of January 2015)**

	Polygons	Points	Total
<b>Realm: terrestrial or marine</b>			
Terrestrial	95	9	104
Marine (partially or completely)	0	0	0
<b>Status: designated or proposed</b>			
Designated	38	9	47
Proposed	57	0	57
Status not reported	0	0	0
<b>International Protected Areas</b>			
	<b>2</b>	<b>1</b>	<b>3</b>
UNESCO World Heritage Sites	1	0	1
Wetlands of International Importance (Ramsar sites)	0	0	0
UNESCO Man and Biosphere Reserves	1	1	2
<b>Regional Protected Areas</b>			
	<b>0</b>	<b>0</b>	<b>0</b>
Baltic Sea Protected Area (HELCOM)	0	0	0
Cartagena Special Protected Area	0	0	0
Marine Protected Area (CCAMLR)	0	0	0
Marine Protected Area (OSPAR)	0	0	0
Site of Community Importance (Habitats Directive)	0	0	0
Special Protection Area (Birds Directive)	0	0	0
Specially Protected Area of Marine Importance (Barcelona Conv.)	0	0	0
<b>National Protected Areas: IUCN Management Category</b>			
	<b>93</b>	<b>8</b>	<b>101</b>
Ia: Strict Nature Reserve	0	0	0
Ib: Wilderness Area	0	0	0
II: National Park	10	5	15
III: National Monument or Feature	0	0	0
IV: Habitat/species management area	8	0	8
V: Protected Area with sustainable use	0	0	0
VI: Protected Landscape/Seascape	17	1	18
Not Reported (NR)	58	2	60
<b>Total number of records in the WDPA for Ethiopia</b>			
	<b>95</b>	<b>9</b>	<b>104</b>

## WDPA Quality Indicators for Ethiopia

### **The percentage of records with boundaries in polygon format**

The WDPA stores all records with spatial (location) data. These data can be polygons which represent the boundaries of the protected area, or a single latitude/longitude point which shows the general location of the protected area. This indicator shows the percentage of records with boundaries - the preferred spatial data.



### **The percentage of data attributes which have been reported by the data provider**

Each record in the WDPA has 25 fields for which data attributes are requested. This indicator shows the weighted percentage of data fields which have been reported, based on the minimum, core and complete attributes.



### **The percentage of records updated or validated by the data provider in the last 5 years**

UNEP-WCMC sets a target to update each record in the WDPA at least every five years. This indicator shows the percentage of records updated in the last 5 years (since January 2010).



### **The percentage of records where the area of the polygon is within 5% of the area reported**

The area (km<sup>2</sup>) reported for a protected area may sometimes differ from the calculated GIS area of the boundary polygon provided, possibly indicating a discrepancy within the information submitted. This indicator shows the percentage of records where the area of the polygon is within a threshold of 5% of the area reported. The threshold allows for differences due to projections and software used for calculating the GIS area.



The range of scores for individual countries in the WDPA

Country score for Ethiopia in January 2015 (solid circle) and 2014 (dotted circle)

Overall score for the WDPA