



From Knowledge to Action for a Protected Planet

BIOPAMA REFERENCE INFORMATION SYSTEM

for Biodiversity and Protected Areas Management in African,
Caribbean and Pacific (ACP) Countries



From Knowledge to Action for a Protected Planet



JRC mission

As the science and knowledge service of the European Commission, the Joint Research Centre's mission is to support EU policies with independent evidence throughout the whole policy cycle.

The JRC has world class expertise in geospatial information systems and analysis for tackling environmental challenges - through BIOPAMA we are focusing this on the needs of the ACP regions and our regional partners.



@EU_ScienceHub



EU Science Hub - Joint Research Centre



Joint Research Centre



EU Science Hub

BIOPAMA REFERENCE INFORMATION SYSTEM

for Biodiversity and Protected Areas Management in African, Caribbean and Pacific (ACP) Countries - ris.biopama.org



Delivering data for better decisions

The protection and sustainable management of biodiversity in the African, Caribbean and Pacific (ACP) countries requires a comprehensive approach that extends beyond the establishment of protected areas. The BIOPAMA Programme not only contributes to the protection of terrestrial and marine biodiversity but seeks to provide relevant data and information to decision-makers at all levels, to enhance biodiversity conservation in ACP countries.

Patrick I. Gomes,
Secretary General of the ACP Group



From Knowledge to Action for a Protected Planet

BIOPAMA aims at reinforcing the management and governance of protected and conserved areas in all the 79 ACP countries. By providing unique and tailored support to protected area authorities at the local, national and regional level, it supports them in achieving their conservation objectives and to report more accurately their progress on relevant multilateral environmental agreements.



Regional Observatories for protected areas coordinate information systems, data collection, analysis, monitoring and reporting and develop the capacities of staff and organisations to make optimal use of this information to address specific needs.



Capacity building activities support protected area management and governance, and enable conservation practitioners, national agencies and protected areas managers to improve decision-making and prioritization of resource allocation.



Site-based targeted actions support local and regional activities and their partners on biodiversity conservation to improve the knowledge base for decision making and address key priorities.

BIOPAMA REFERENCE INFORMATION SYSTEM

for Biodiversity and Protected Areas Management in African, Caribbean and Pacific (ACP) Countries - ris.biopama.org





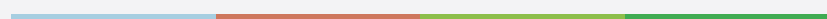
Phase 1 (2011 -2017)

Delivered capacity building activities and access to high-quality data and information on the status of protected areas in 79 ACP countries.



Phase 2 (2017 -2023)

‘From Knowledge to Action’ will provide tools for addressing specific regional or community needs related to conservation planning and decision making.



"High quality data is indispensable for effective planning and decision making in conservation. BIOPAMA will provide the data needed to better manage protected areas so that they continue to provide life-supporting benefits to people around the world."

Inger Andersen
IUCN Director General



A Knowledge Platform for Protected Areas and Biodiversity in the ACP regions

The three pillars of the Platform



Regional Observatories

Hosted by well-established regional institutions, these are the central pillar of BIOPAMA's work. They drive the needs, support data collection, analysis, monitoring and reporting, develop the capacities of staff and organisations to manage this information and provide policy guidance for better decision making on biodiversity conservation.



Site-level studies

On-site activities support protected area planning and management through the collection and analysis of fundamental information on the status of biodiversity as well as current management and governance arrangements. Management and governance assessment tools also help identify priority actions that could be eligible for BIOPAMA funding.



Regional Information Systems

- These systems are free, secure and built using open source technologies. They are accessible and customisable by accredited users in the regions.
- They host regional data, provide tools and support planning, policy and decision-making on protected areas and biodiversity.
- They support a broad range of data types: field data, satellite imagery, maps, photos, surveys, documents, indicators.

BIOPAMA REFERENCE INFORMATION SYSTEM

for Biodiversity and Protected Areas Management in African, Caribbean and Pacific (ACP) Countries - rris.biopama.org

A quick overview of the BIOPAMA Reference Information System

What you can do



Connect

With the BIOPAMA community
With news and events in the region



Learn

About new approaches and opportunities
How to use relevant data and tools



Explore

Data, documents and stories
Maps, analyses and indicators



Analyse

Assess the status of protected areas and biodiversity
Combine data from different sources and domains
Support decisions and actions



Contribute

Store and share data, documents and stories
Create maps, analyses and indicators



Regional bodies collect needs,
consult with stakeholders,
request and gather relevant
protected areas and
biodiversity data

From Knowledge to Action

ACP-wide Reference Information System



Decisions and actions
with better data and
information

**Monitoring and
reporting**
with better analyses
and indicators

Managing and planning
with solid outcomes
to drive decisions

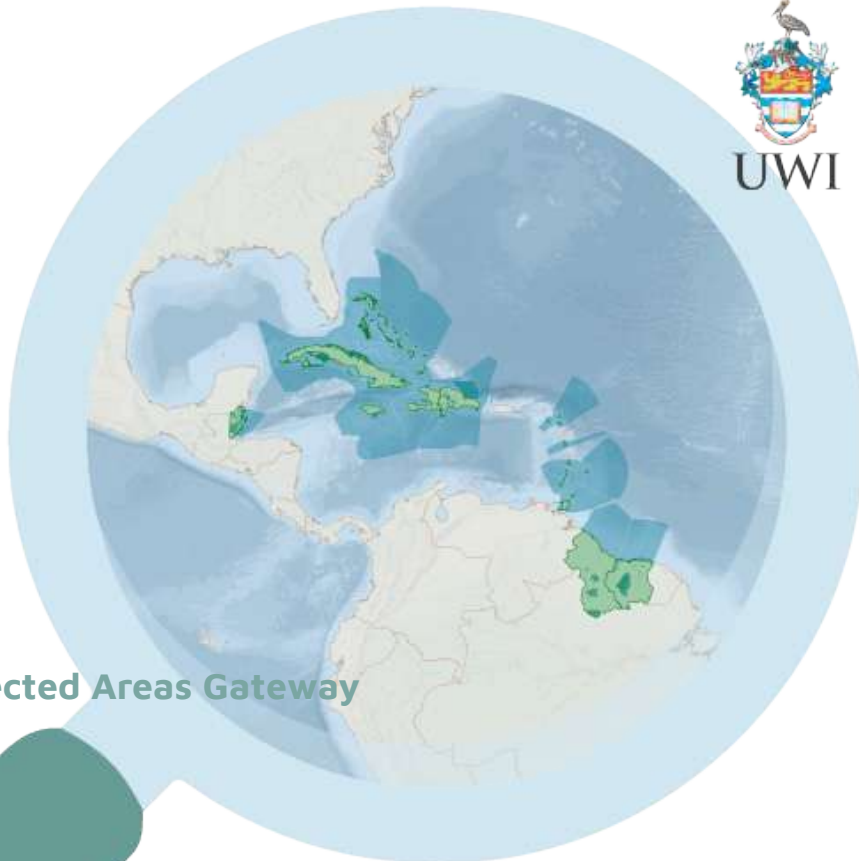
**Communication and
collaboration**
with better tools and
technologies

BIOPAMA REFERENCE INFORMATION SYSTEM

for Biodiversity and Protected Areas Management in African,
Caribbean and Pacific (ACP) Countries - ris.biopama.org

The BIOPAMA knowledge platforms:

Pooling local expertise to support decision-making in the ACP regions



Caribbean Protected Areas Gateway

The launch of the Caribbean Gateway was a critical moment for the University of the West Indies (UWI) in terms of our role in regional networking and sustainable development as it concerns linking data to better decision-making.

Patrick McConney

Senior Lecturer at UWI's Centre for Resource Management and Environmental Studies (CERMES)



Take part in BIOPAMA

- ✓ Join the BIOPAMA community
- ✓ Benefit from broader networking opportunities
- ✓ Make contact with local, national and regional authorities
- ✓ Use enhanced tools for protected areas planning and management
- ✓ Access advanced resources and expertise for biodiversity conservation

Geospatial information technologies offer tremendous opportunities in terms of protected area management and biodiversity conservation. Working with our partners, we will customize these technologies according to regional needs across all ACP regions.

Stephen Peedell

BIOPAMA Coordinator at the Joint Research Centre of the European Commission

BIOPAMA underlines the link between people and nature – we face global threats to biodiversity but these can only be properly addressed by enabling sustainable development as part of efforts to conserve ecosystems. Information is fundamental to understanding these relationships and making smart decisions. JRC applies all of its renowned expertise and experience in delivering high quality, robust data and knowledge products to support this.

Alan Belward

Head of the Knowledge for Sustainable Development and Food Security
Unit at the Joint Research Centre of the European Commission

CONTACT THE JRC TEAM



Stephen Peedell
JRC Project Coordinator

JRC-BIOPAMA@ec.europa.eu

CONTACT THE IUCN TEAM



Pedro Rosabal
IUCN Project Coordinator

biopama@iucn.org



From Knowledge to Action for a Protected Planet

Donors & Implementing Partners



This publication has been produced with support of the 11th EDF. The contents of this publication are the sole responsibility of IUCN and the European Commission's Joint Research Centre and can in no way be taken to reflect the views of the European Union nor of the ACP Group of States.

www.biopama.org