

PITONS MANAGEMENT AREA

DEPARTMENT OF
SUSTAINABLE
DEVELOPMENT

MINISTRY OF
EDUCATION, GENDER
RELATIONS AND
SUSTAINABLE
DEVELOPMENT



**PRESENTATION
GUIDE:**

OVERVIEW

**GOVERNANCE STRUCTURES AND KEY DOCUMENTS ON
MANAGEMENT**

**READILY ACCESSIBLE PROCESS FOR HEARING AND
RESOLVING DISPUTES OR GRIVIANCES RELATED TO
GOVERNANCE OR MANAGEMENT**

**NATURAL AND CULTURAL VALUES AND ASSOCIATED
ECOSYSTEM SERVICES**

AVAILABILITY OF APPROPRIATE MANAGEMENT ASSETS

SOCIAL AND ECONOMIC CONTEXT

WHAT IS THE PMA?

A 2,909 hectare site along the west coast town of Soufriere

An Environmental Protected Area under the Physical Planning Act No. 29 of 2001 (CAP 5.12)

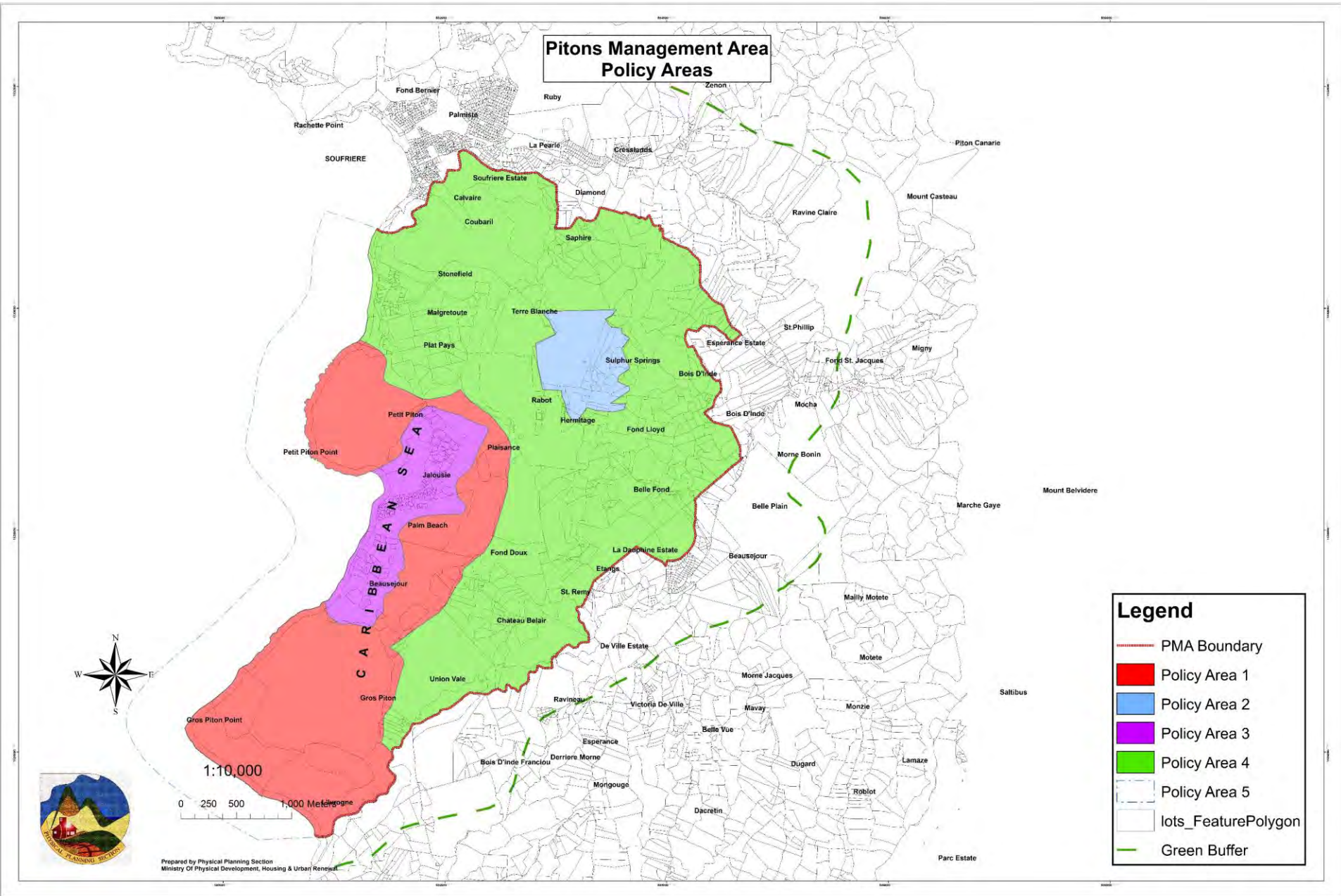
A **Management Plan** for the area was approved by the CABINET OF MINISTERS OF SAINT LUCIA BY CABINET CONCLUSION NUMBER 387, of 16TH JUNE, 2003

The PMA was inscribed on the UNESCO World Heritage List on June 30, 2004 under **Criteria vii & viii** of the **UNESCO World Heritage Centre Operational Guidelines**. These **Guidelines** present precise criteria for the inscription of properties on the World Heritage List.

A LIMITS of ACCEPTABLE CHANGE (LAC) STUDY for the Property was completed in 2013



Pitons Management Area Policy Areas



Legend

- PMA Boundary
- Policy Area 1
- Policy Area 2
- Policy Area 3
- Policy Area 4
- Policy Area 5
- lots_FeaturePolygon
- Green Buffer



Prepared by Physical Planning Section
Ministry Of Physical Development, Housing & Urban Renewal

**JUSTIFICATION
FOR
INSCRIPTION
CRITERION
VIII:**

The Pitons are outstanding examples representing **major stages of earth's history**, including the **record of life, significant on-going geological processes in the development of landforms, or physical features**

The PMA contains the greater part of a **collapsed strato-volcano** contained within the volcanic system, known to geologists as the **Soufriere Volcanic Centre** or **the Qualibou Caldera**.

Prominent within this volcanic landscape are two eroded remnants of lava domes, Gros Piton and Petit Piton.



JUSTIFICATION FOR INSCRIPTION CRITERION VII:

The PMA derives its primary visual impact and aesthetic qualities from the Pitons

2 adjacent forest-clad volcanic lava domes rising abruptly from the sea to heights greater than 700m – The Pitons

The Pitons predominate over the St Lucian landscape, being visible from virtually every part of the island; providing a distinctive landmark for seafarers

The combination of the Pitons against the backdrop of green tropical vegetation and a varying topography combined with a marine foreground gives the area its superlative beauty

SOME NATURAL ASSETS

The Pitons

Sulphur Springs Park

Botanical Gardens

Waterfalls

Nature Trails (Tèt Paul, Gros Piton)

Unique flora and fauna

Petroglyphs (Rock Art)

Marine parks

Relics of the PMA History

PA MANAGEMENT CATEGORY

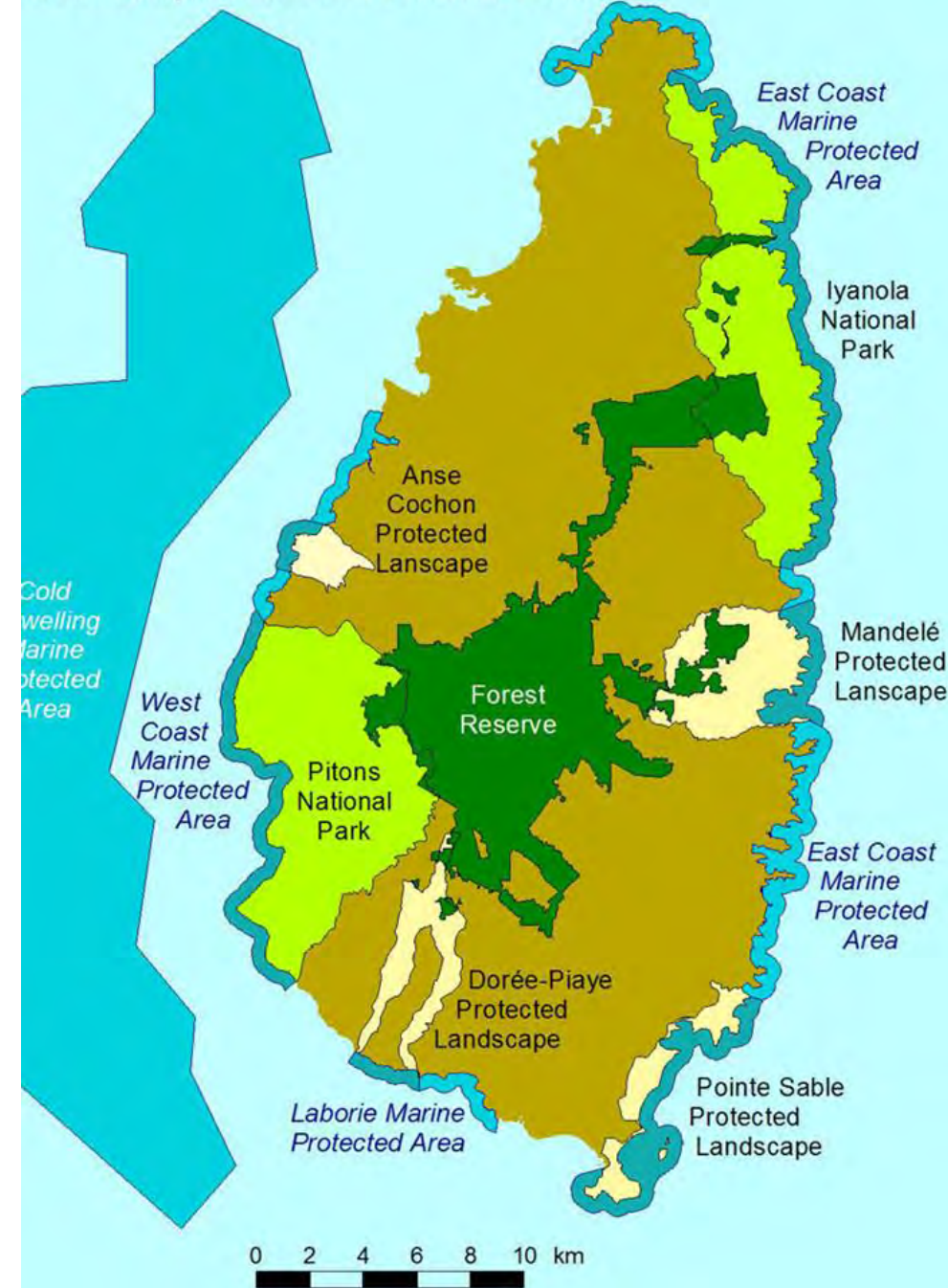
Area established as an Environmental Protection Area under the Physical Planning Act, that is, the legal framework for establishment and management of the PMA will be the Physical Planning Act #29 (cap 5.12) of 2001

In the (Proposed Systems Plan 2009) as a IUCN Category II - National Park

34. PROTECTION OF NATURAL AREAS

- (1)
- (2) *Where the Head of the Physical Planning and Development Division is of the view that it is desirable to afford special protection to any area on a list compiled or adopted under subsection (1), the Minister may, by order published in the Gazette declare that area to be an environmental protection area.*

The Forest Reserve and Proposed National Parks, Protected Landscapes and Marine Protected Areas





VISION

... a well managed area in which the natural and cultural assets and landscape qualities are protected through a participatory management approach which is guided by the principles of sustainability, equity and participation; and in which benefits are generated for individuals, the community and the state.

PMA Management Plan 2003



OBJECTIVES

preserve the integrity and productivity of ecological systems;

preserve the integrity of historical and cultural resources;

protect the PMA using different management instruments to ensure that the landscape quality is not compromised;

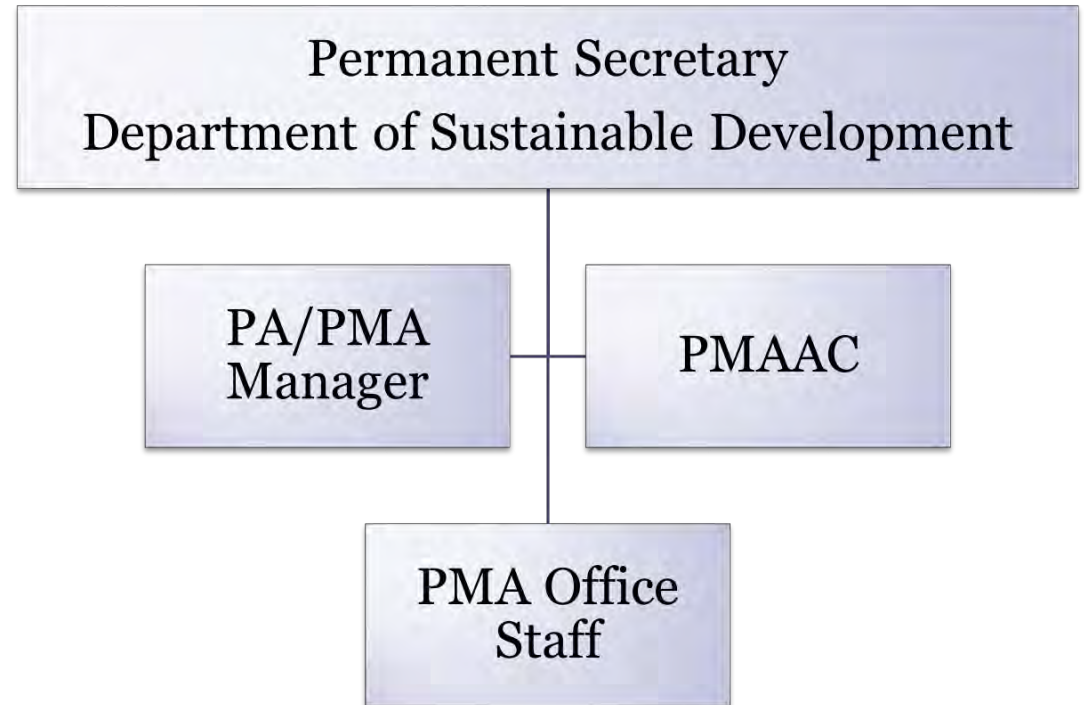
provide a mechanism for participation of various publics in the sustainable development and management of the PMA;

promote nature heritage tourism;

encourage research on the various resources of the PMA to improve understanding and to generate data for effective management; and

optimise the contribution of the natural and cultural resources for sustainable development.

GOVERNANCE



PITONS MANAGEMENT ADVISORY COMMITTEE (PMAAC)

A multi-agency body that provides oversight to the management of the PMA and facilitates a coordinated and integrated approach to management of the PMA. This body comprises representatives from agencies with management and planning responsibilities in the PMA as well as stakeholders from the communities.

Permanent Secretary (or designee), Department of Sustainable Development (Chair)

Chief Physical Planning Officer

Chief Forestry Officer

Chief Sustainable Development & Environment Officer

Secretary General, National Commission for UNESCO

Director, Saint Lucia National Trust

Representative of the Soufrière Marine Management Authority (SMMA)

Executive Director, Soufrière Regional Development Foundation (SRDF)

Representative of the Business Sector in Soufrière (Tourism)

Representative of the La Pointe/Delcer Communities (Choiseul)

Fond Gens Libres Community Representative (Soufrière)

Protected Areas Manager- Secretary to the Committee



HISTORICAL & CULTURAL VALUES

Rich historical and cultural heritage

Rich and Varied History represented by the Prevalence of archaeological (petroglyphs, Brigand sites) sites and historical remains

The Amerindians apparently worshipped the two Pitons:

Petit Piton was referred to as **Atebyra**, representing their God of Fertility, Food (Manioc)

Gros Piton, was referred to as **Yokahu**, represented their God of Fire, Thunder & Rain

Subsequent inhabitants depended heavily on the Soufriere region for agricultural production, cultivating crops such as tobacco and coffee, followed by cotton, sugar cane, coconut, citrus and bananas

Area served as a refuge for runaway “Brigand” slaves



BIODIVERSITY VALUES

In the Terrestrial Component, the Landscape of the Pitons

Combination of slope, climate and soil regimes have given rise to at least

148 plant species and 27 bird species on Gros Piton

97 species of plants and 50 species of birds have been recorded for the area of Petit Piton and the adjoining ridge between the Pitons,

A high level of endemic and rare species. Area in and around the Pitons boasts

5 endemic birds (the Saint Lucia Oriole, *Icterus laudabilis*; Saint Lucia Black Finch, *Melanospiza richardsoni*; Saint Lucia Flycatcher, *Myiachus oberi sanctae luceae*, Saint Lucia Pewee, *Contopus oberi*; and Saint Lucia Wren, *Troglodytes aedon sanctae luceae*);

2 endemic plants (*Acalypha elizabethae* and *Bernardia laurentii* (both rare shrubs, with the latter endemic to the summit of Petit Piton); three rare vines (*Gonolobus martinicensis*, *Amphilophium paniculatum*, and *Melothria pendula*),

6 rare trees (*Ocotea coriacea*, *Guarea kunthiana*, *Krugiodendron ferreum*, *Picrasma excelsa*, *Forestiera eggersiana* and *Randia nitida*),

2 rare shrubs (*Justicia carthaginensis* and *Piper reticulatum*) and a rare herb (*Eipatorium microstemon*).

VALUES-3

In the Marine Component reefs found within the coastal portion of the Pitons are among the healthiest and most diverse on island

Area is characterized by a steep submarine shelf comprising areas of fringing and patch reefs separated by sandy plains where one can discover:

168 species of finfish

60 species of cnideria (including corals, anemones, hydroids and zooanthids)

8 mollusc species (chiton, squid, clam, octopus, conch, cowrie)

14 sponges and 11 echinoderm (urchin, sea cucumber, basket and brittle star, crinoid)

15 arthropod (barnacle, crab, shrimp, lobster) and 8 annelid (worm) species

ECOSYSTEM SERVICES

Agriculture and fishing remain important livelihoods within the area; the former characterized by subsistence or mixed farming systems on small to medium size properties and the latter largely comprising a traditional artisanal fishery

In the years following inscription, Tourism has grown significantly as a livelihood activity and urban developments have occurred

Geological features provide the landscape attributes that provide benefits and attract visitors

The natural heritage, and more specifically the Pitons, Sulphur Springs park, rain forest, coral reefs, botanic gardens and waterfalls, are key attractions for the average tourist visitor to Soufriere

The area in and around the Pitons, including the Sulphur Springs, is of significant cultural and symbolic value to Saint Lucia, featuring most prominently as a national symbol on advertising and promotional materials and also provide an outstanding coastal vista as the world's only example of closely paired, coastal volcanic cumulo-domes.

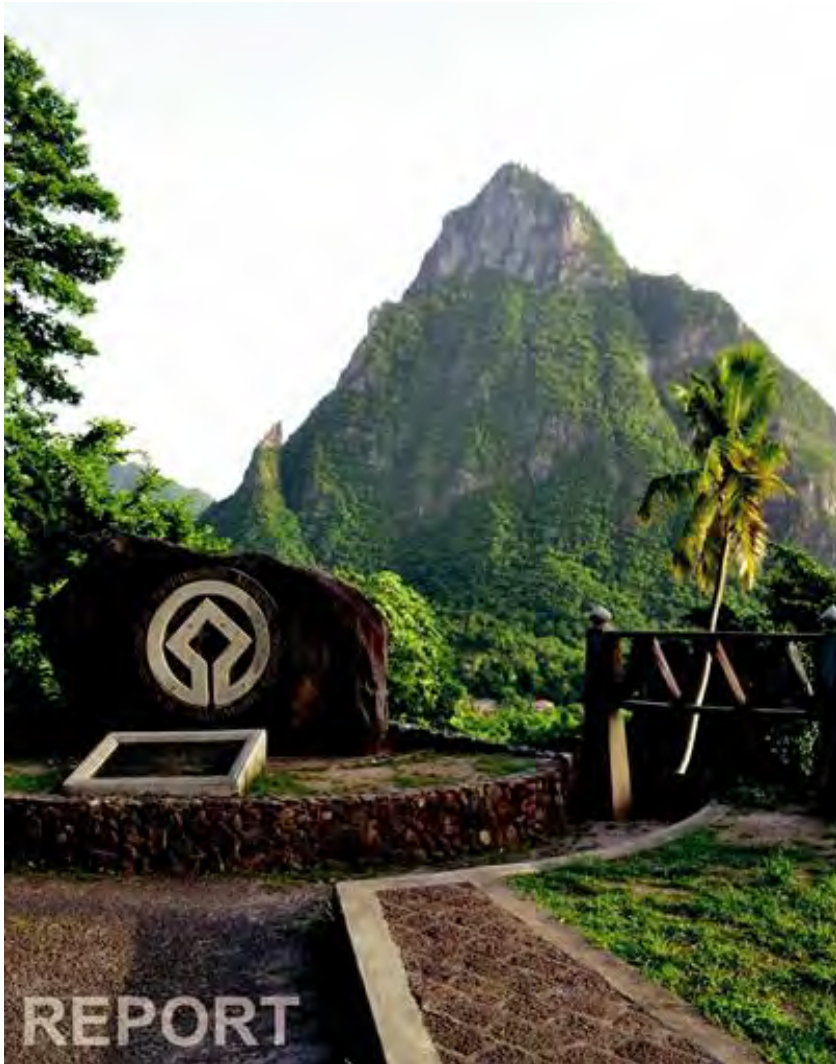
CHALLENGES WITH INVASIVE PLANT SPECIES

Callisia fragrans: A hardy ground cover Commelinaceae, this species escapes around houses into wasteland in Saint Lucia. It is common on some islands of the Grenadines and invasive in some Pacific Islands such as Hawaii



Wandering jew “Tradescantia zebrina” native to Mexico, has a tendency to naturalize





RESPONSE TO DEVELOPMENT PRESSURES

LIMITS OF ACCEPTABLE CHANGE (LAC) STUDY 2013

PMA OFFICE

Established in 2006 to as a requirement of the PMA Management Plan to

Protect and maintain the patrimony and integrity of St. Lucia's World Heritage Site

Ensure that the outstanding universal value of the site is not compromised

Facilitate World Heritage and Physical Planning/DCA compliance by

Monitoring developments within the area

Acts as a liaison between UNESCO and community at large through the dissemination of information

Acts as a referral agency for the Ministry of Physical Development, Housing and Urban Renewal and the Development Control Authority (DCA) through PMAAC

PMACC meetings held quarterly



AREA TOUR:

INSCRIPTION MONUMENT

SULPHUR SPRINGS PARK

TET PAUL NATURE TRAIL

BOAT TOUR OF MARINE COMPONENT