

BIOPAMA Phase 2 Information Tools for Protected Areas

Steve Peedell, Mélanie Weynants

European Commission

Joint Research Centre (JRC), Directorate for Sustainable Resources



European Commission
Joint Research Centre

BIOPAMA
From Knowledge to Action for a Protected Planet

A grayscale photograph of a group of people in a meeting room. They are gathered around a table, looking at a laptop screen and discussing documents. The scene is dimly lit, with the primary light source coming from the laptop screen. The people are dressed in casual to business-casual attire. The overall atmosphere is one of collaborative work and discussion.

Make the link between biodiversity and development

Provide evidence of progress towards targets

Improve knowledge of what works and doesn't work in PA management

Support, train and learn from PA practitioners in the ACP regions

Show how geospatial technology can make a genuine difference

Demonstrate that better data leads to better decisions

Build partnerships that last and that have impact

Coordination



Stephen Peedell
JRC PROJECT COORDINATOR



Terhi Takala
PROJECT ASSISTANT



Rossana Cervini
JRC RESOURCE ADMINISTRATOR



Serena Boccoardo
SCIENCE WRITER

IT Development



James Davy
WEB DEVELOPER



Andrew Cottam
CONSERVATION TOOL DEVELOPER



Martino Boni
GIS DEVELOPER



Michele Conti
SENIOR SYSTEM ANALYST



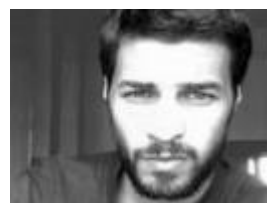
Andrea Mandrici
DOPA DEVELOPER



Andrea Marelli
IMET DEVELOPER



Giacomo Delli
DOPA DEVELOPER



Luca Battistella
DOPA DEVELOPER

Thematic / Content



Zoltan Sántoi
REMOTE SENSING SPECIALIST



Krasimira Gamisheva
CONSERVATION DATA ANALYST



Mariagrazia Graziano
MARINE PROTECTED AREA SPECIALIST



Lucy Bastin
SPECIES CONSERVATION SPECIALIST



Andreas Brink
LAND COVER SPECIALIST



Mélanie Weynants
SPATIAL DATA ANALYST



Paolo Roggeri
IMET COORDINATOR



Claudia Capitani
SPATIAL DATA ANALYST



Christine Estreguil
LANDSCAPE ECOLOGIST SPECIALIST



Grégoire Dubois
DOPA COORDINATOR



Jan Philipp Schägner
ECOSYSTEM SERVICES SPECIALIST



Bastian Bertzky
TERRESTRIAL PROTECTED AREA SPECIALIST

Connect to the JRC BIOPAMA Team – at your service! jrc-biopama@ec.europa.eu

Providing tools for

Generating and sharing protected area indicators

Measuring progress towards conservation targets

Understanding what makes protected areas work – management effectiveness and governance

Connecting PA professionals

Sharing data and maps

Systematic Conservation Planning

Visual Storytelling



HOME

PROTECTED AREA

COUNTRY

ECOREGION

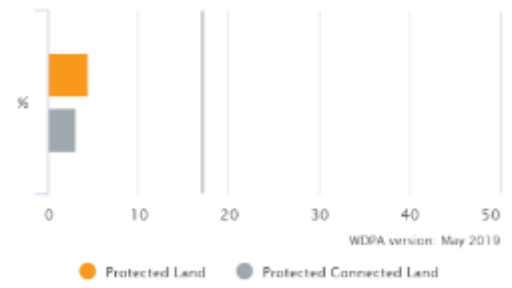
GLOBAL

DATA



FIJI

Country coverage by protected areas and connected protected areas (connectivity)



Terrestrial Area		
15 LIFE ON LAND	4.4%	802.9 km ² Protected Land Area
	Coverage	18286.4 km ² Total Land Area
Terrestrial Aichi Target 11 threshold (17%)		
Marine Area		
14 LIFE BELOW WATER	0.9%	12128.6 km ² Protected Marine Area
	Coverage	1284173 km ² Total Marine Area
Marine Aichi Target 11 threshold (10%)		

BIOPAMA – ACP-wide Reference Information System

Covers the 79 ACP countries

Open source and open services

Evolution from a "dashboard" to a means of measuring conservation progress and targets

Components can be used as needed in sub-regional systems

Additional modules – IMET, GeoNode, Yammer, Analysis

Regional Reference Information Systems

Caribbean Gateway – University West Indies

Pacific Islands Protected Areas Portal - SPREP

SADC TFCA Portal

Central Africa - OFAC

Eastern & Southern Africa - RCMRD


Western Africa - CSE – RAMPAO - Univ.Ghana – AgrHyMet

BIOPAMA2 – technical support contracts for system development

Reference Information System (RIS) 2015-2018

Home » Protected Area Search » Kenya » Ol Pejeta Conservancy

WDPA ID	Status	English Designation	Management Authority
555566900	Not Reported	Private Protected Area	Private



Images

Small Medium Large

Neighbouring PA's

Aggregation including 3rd party content


Embedded map interface

Reuse of DOPA indicators

General Habitats Species Climate Pressures Management References

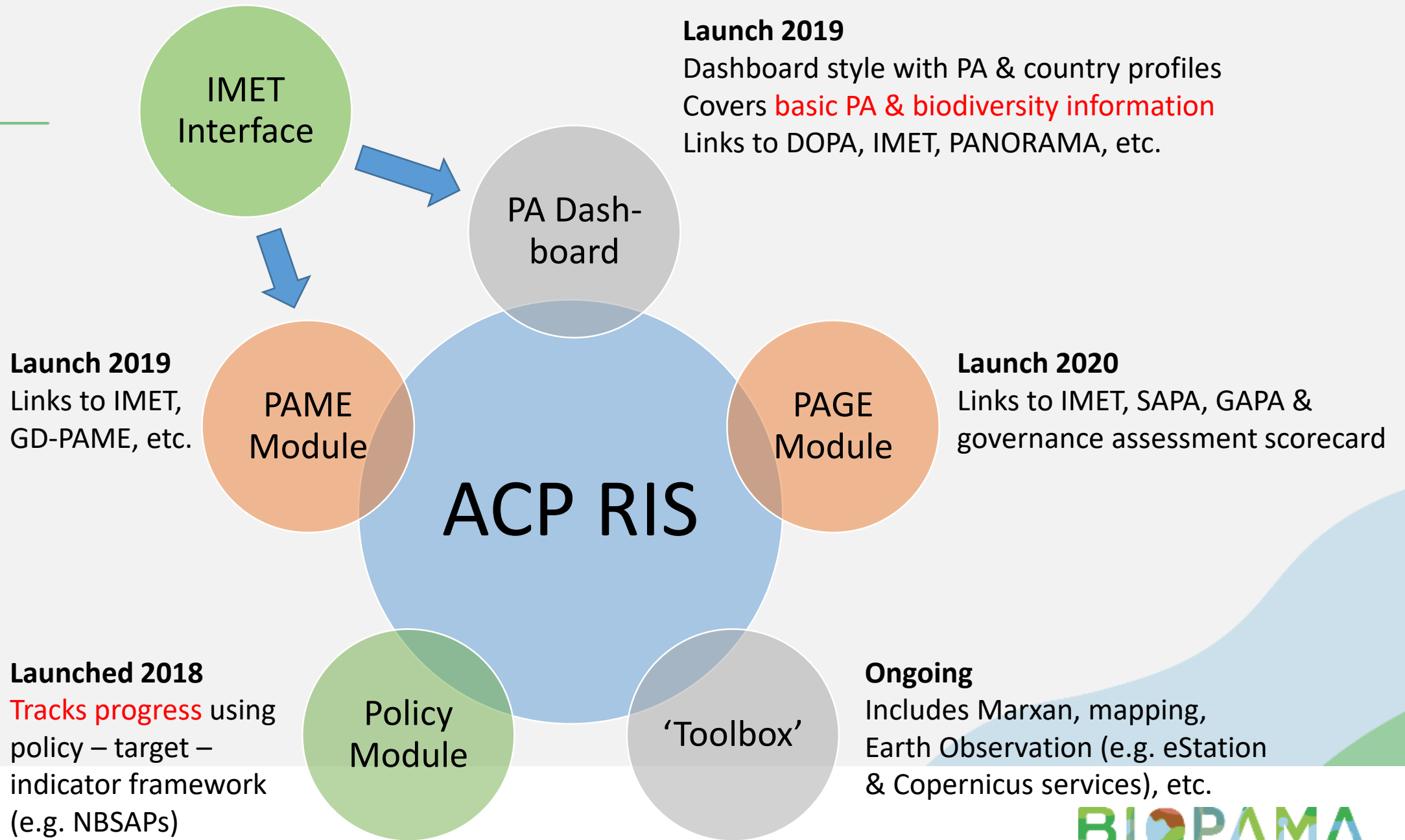
Protected Area Name: Ol Pejeta Conservancy
Country: Kenya
This protected area does not have land cover change information.
This PA is not marine
[Link to DOPA](#)
[Link to Protected Planet](#)

DOPA indicators for Ol Pejeta Conservancy



Indicator	Value (approx.)
Terrestrial Habitat Complexity	75
Agricultural Pressure	25
Population Pressure	25
Population Change	25
External Road Pressure	25
Internal Road Pressure	25
Amphibians	25
Birds	25

Country Average Value for Ol Pejeta Conservancy



ACP Reference Information System 2019-

BIOPAMA



Login

BIOPAMA RIS

Data and Information for protected areas management and biodiversity conservation

The BIOPAMA (Biodiversity and Protected Areas Management) Reference Information System (RIS) is our web-based, open-source information system for protected areas across the 79 countries of the African, Caribbean, Pacific (ACP) Group of States.

This version - the "RIS 2.0" - is a major re-design to the previous version. We now have a set of modules, so whether you want to track progress towards conservation targets, or focus on protected area performance, or analyse conservation scenarios, or simply browse facts, figures and story maps, you can do it through the modules presented here.

- Protected Area Dashboard** (PA DASHBOARD)
- Protected Area Management Effectiveness** (MODULE PAME)
- Tracking Conservation Targets** (TRACKING TOOL)
- Sharing Spatial Data on Protected Areas** (BIOPAMA GEONODE)
- BIOPAMA Analytics** (MARXAN WEB)
- Story Maps** (STORY MAPS)

ACP RIS policy tracking module

EXPLORE

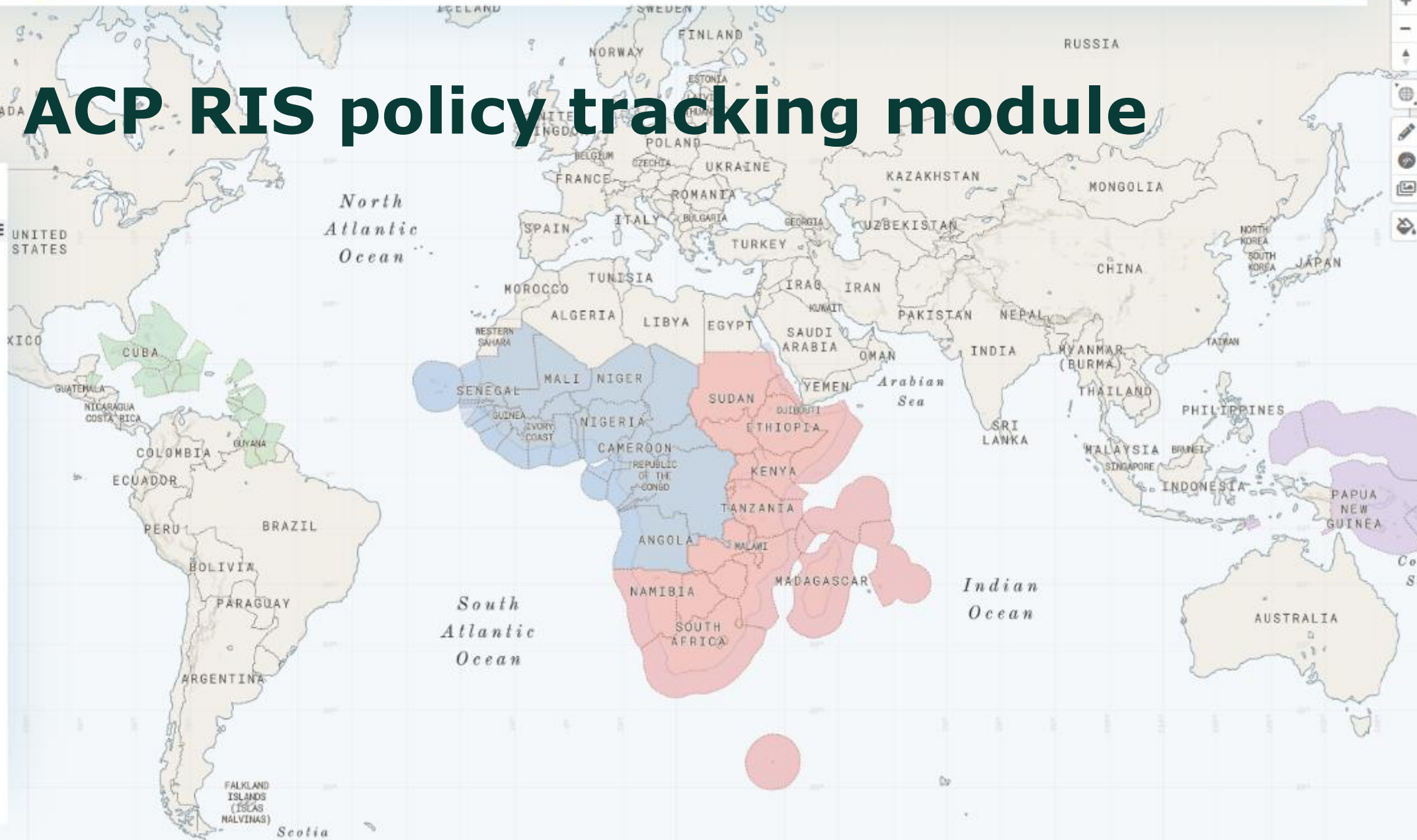
State Pressure **Response**

Global  >

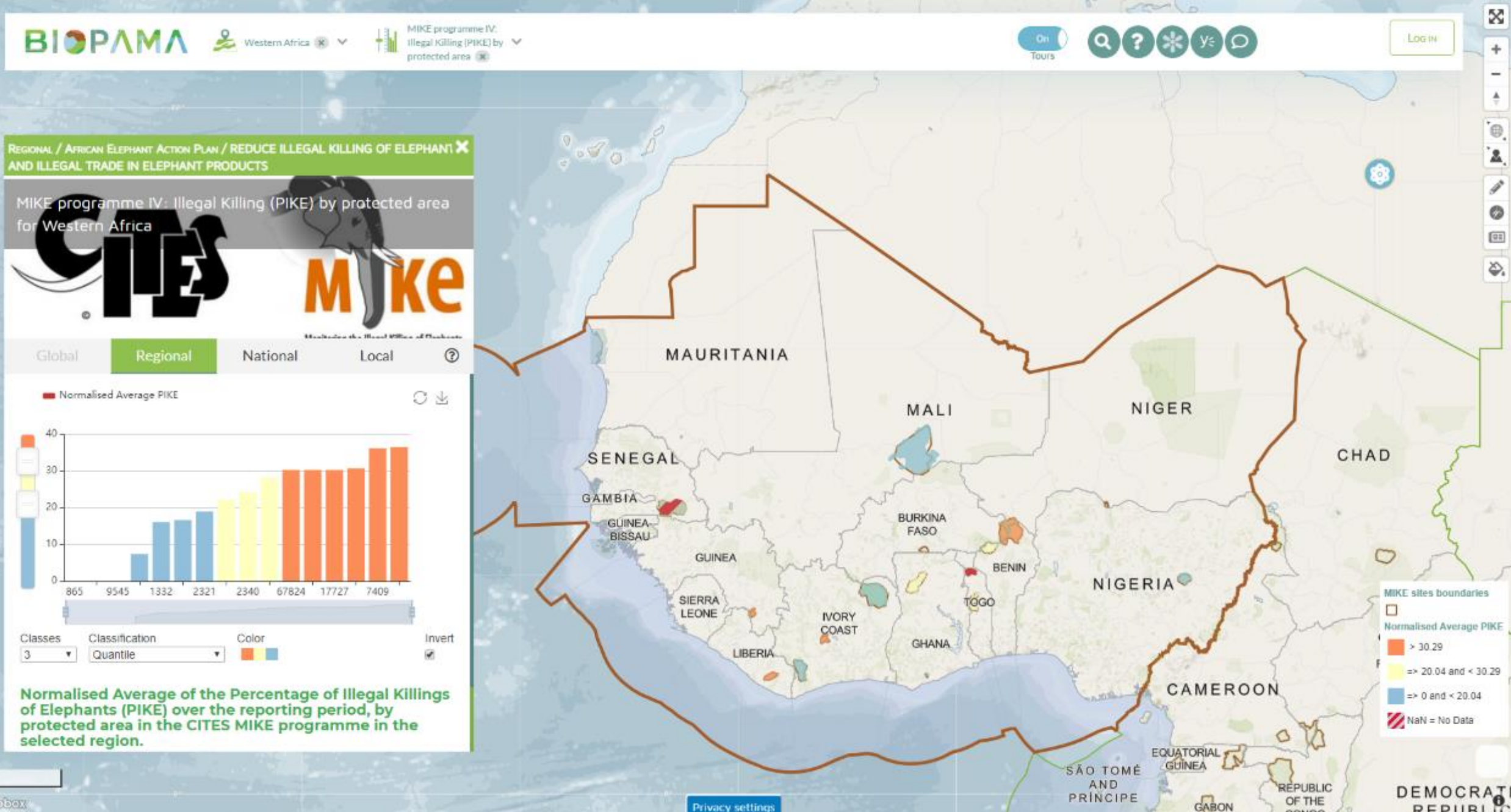
Regional  >

National  >

Local  >



ACP RIS – policy tracking module



ACP RIS – PA dashboard

ACP Protected Area Dashboard

This Protected Area (PA) Dashboard of the BIOPAMA Reference Information System (RIS) provides easy access to essential information on the protected areas and protected area systems in the African, Caribbean and Pacific (ACP) countries.

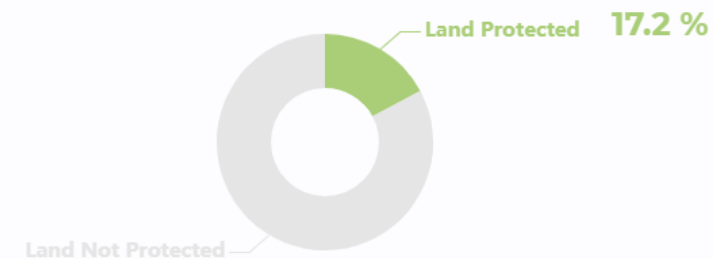
The principal source for the protected area information is the Digital Observatory for Protected Areas (DOPA), a global information system managed by the Joint Research Centre of the European Commission, using data from the World Database on Protected Areas (WDPA) managed by UNEP-WCMC.

The dashboard supports the ACP Secretariat, BIOPAMA Regional Observatories, national ministries and agencies, PA managers and staff, and others (e.g. donors and NGOs).

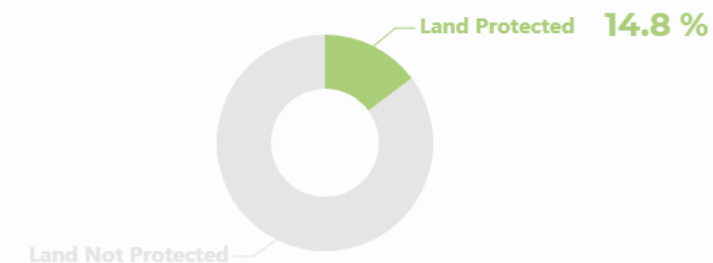
Learn how this module works and find the full documentation in the Learn & Explore section.

ACP Total Coverage

Total ACP Protected Land (1000 x km²) = 3,842



CARIBBEAN coverage



Print Copy CSV

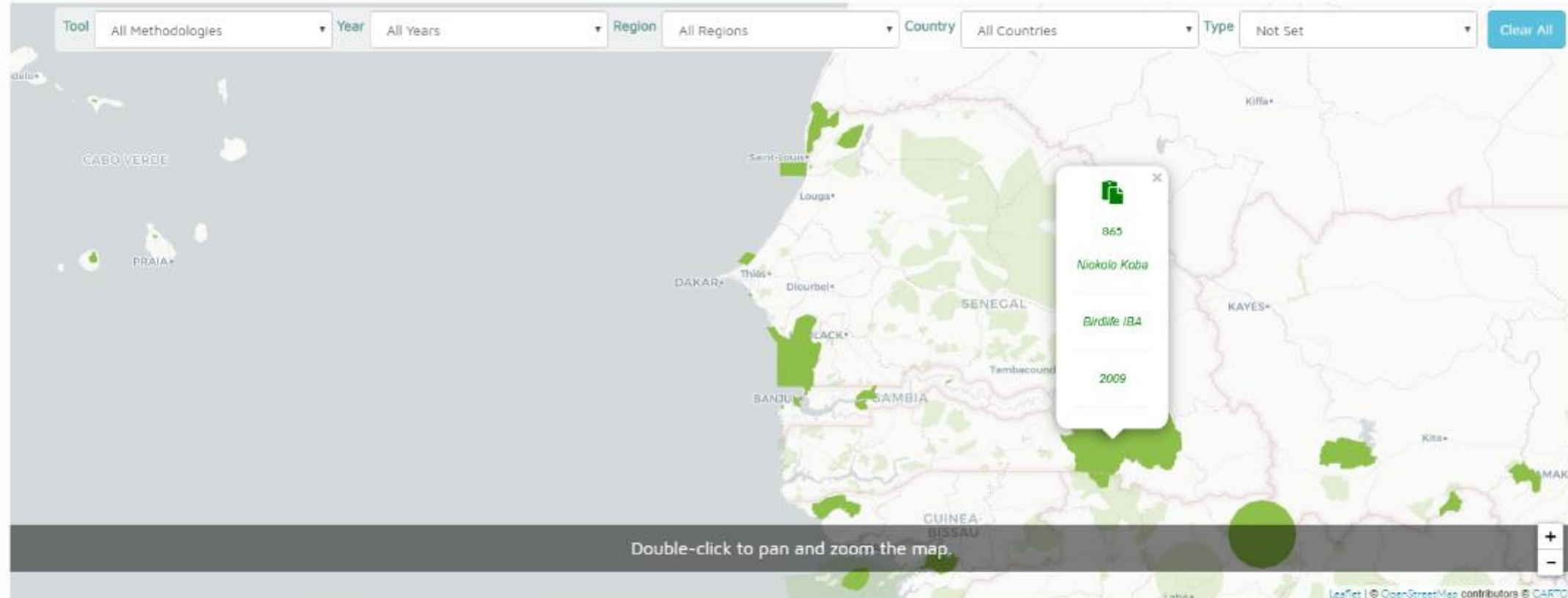
COUNTRY NAME	ISO3	REGION	POPULATION	LAND AREA	PROT MARINE AREA KM2	PROT TERRESTRIAL AREA KM2	TOTAL PROTECTED
Antigua and Barbuda	ATG	Caribbean	96286	440	377.98	73.47	451.45
Bahamas	BHS	Caribbean	385640	10010	47315.45	4611.45	51926.9
Barbados	BRB	Caribbean	286641	430	83.36	5.02	88.38
Belize	BLZ	Caribbean	383071	22810	4753.56	8300.48	13054.04
Cuba	CUB	Caribbean	11338138	104020	16481.38	17650.94	34132.32
Dominica	DMA	Caribbean	71625	750	31.2	164.67	195.87
Dominican Republic	DOM	Caribbean	10627165	48310	43079.58	12476.18	55555.76
Grenada	GRD	Caribbean	111454	340	26.43	31.24	57.67
Guyana		Caribbean	779004	196850	12	18262.26	18274.26

ACP RIS – PAME module

PAME Dashboard

Assessments

Data Source: Global Database on Protected Area Management Effectiveness (GD-PAME)



Copy CSV Excel Print PDF Search: Senegal

WDPAID	PROTECTED AREA	DESIGNATION	ISO-3 CODE	COUNTRY	REGION	METHODOLOGY	YEAR	TYPE
865	Niokolo Koba	National Park	SEN	Senegal	Western Africa	Birdlife IBA	2009	Terrestrial
866	Delta du Saloum	National Park	SEN	Senegal	Western Africa	METT	2016	Coastal
867	Oiseaux de Djoudj	National Park	SEN	Senegal	Western Africa	IMET	2016	Terrestrial
2578	Djoudj National Bird Sanctuary	World Heritage Site (natural or mixed)	SEN	Senegal	Western Africa	WHA Outlook Report	2012	Terrestrial
2580	Niokolo-Koba National Park	World Heritage Site (natural or mixed)	SEN	Senegal	Western Africa	Birdlife IBA	2001	Terrestrial

Copernicus HotSpot Monitoring



Story Map Narratives and Visualisations



From Knowledge to Action for a Protected Planet

Coral Reefs percentage protected and unprotected



(Click on the COUNTRY name to navigate on the map)

Antigua and Barbuda



Bahamas



Barbados



Belize



Cuba



Dominican Republic

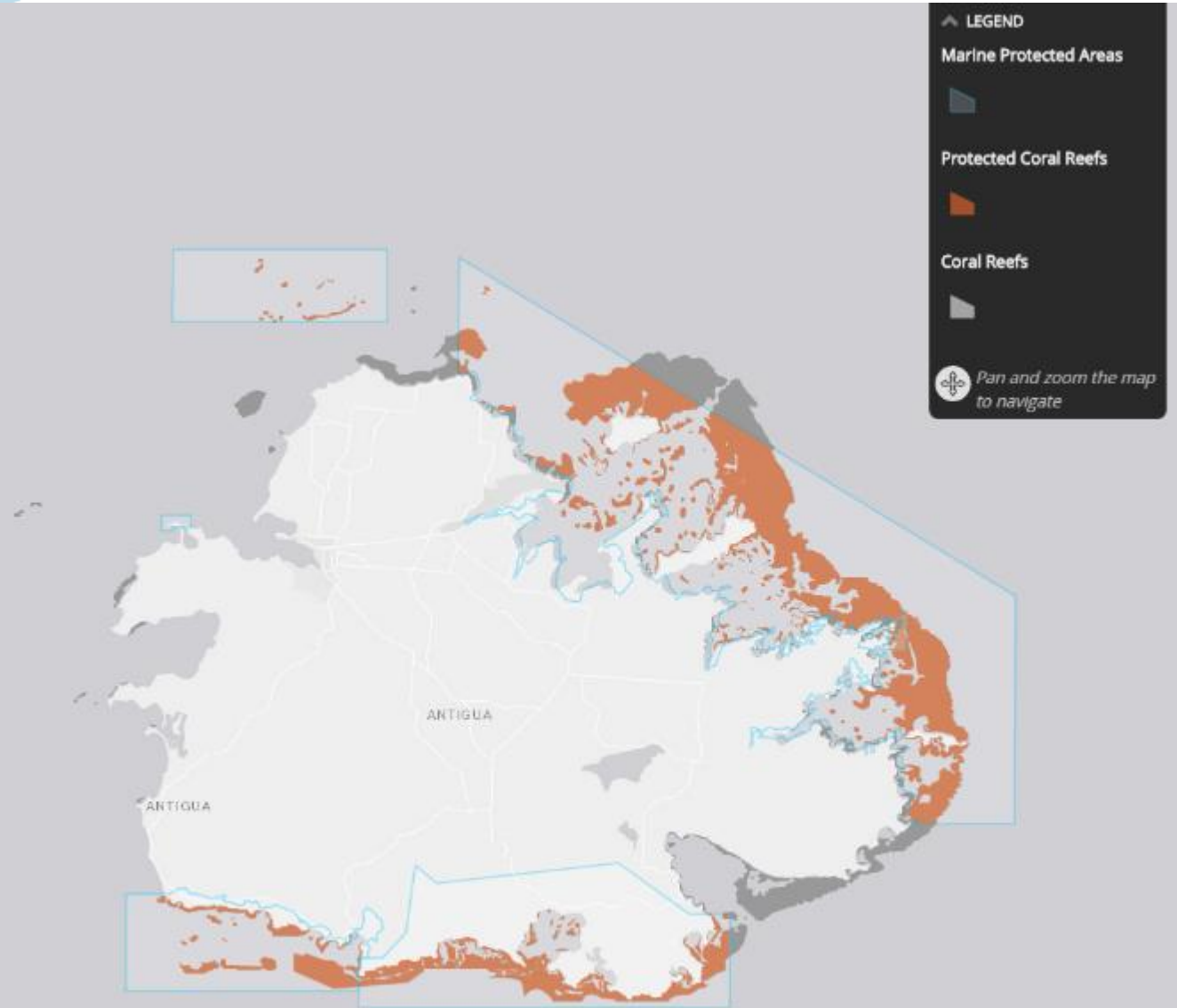


Grenada

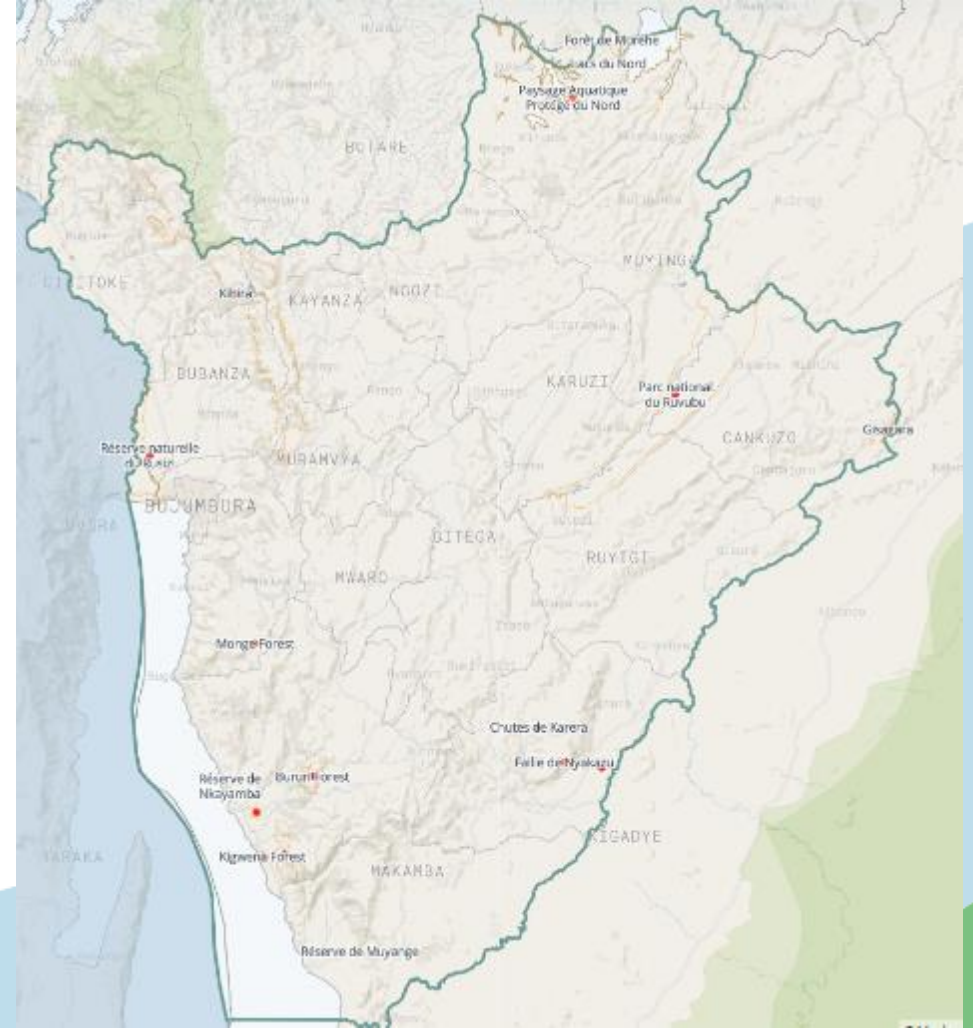
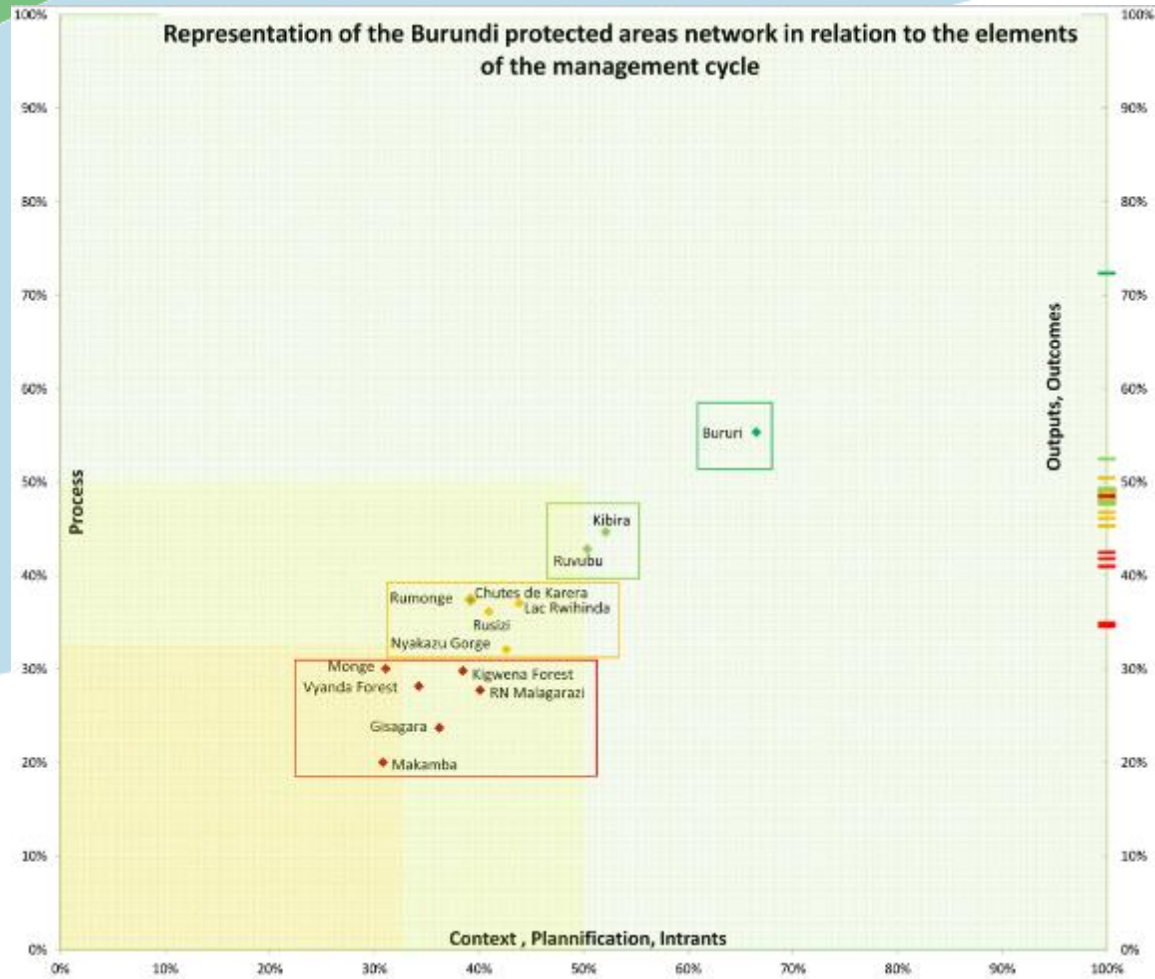
Jamaica

Saint Lucia

SCROLL OR USE THE ARROW KEYS UP AND DOWN TO MOVE BETWEEN SLIDES



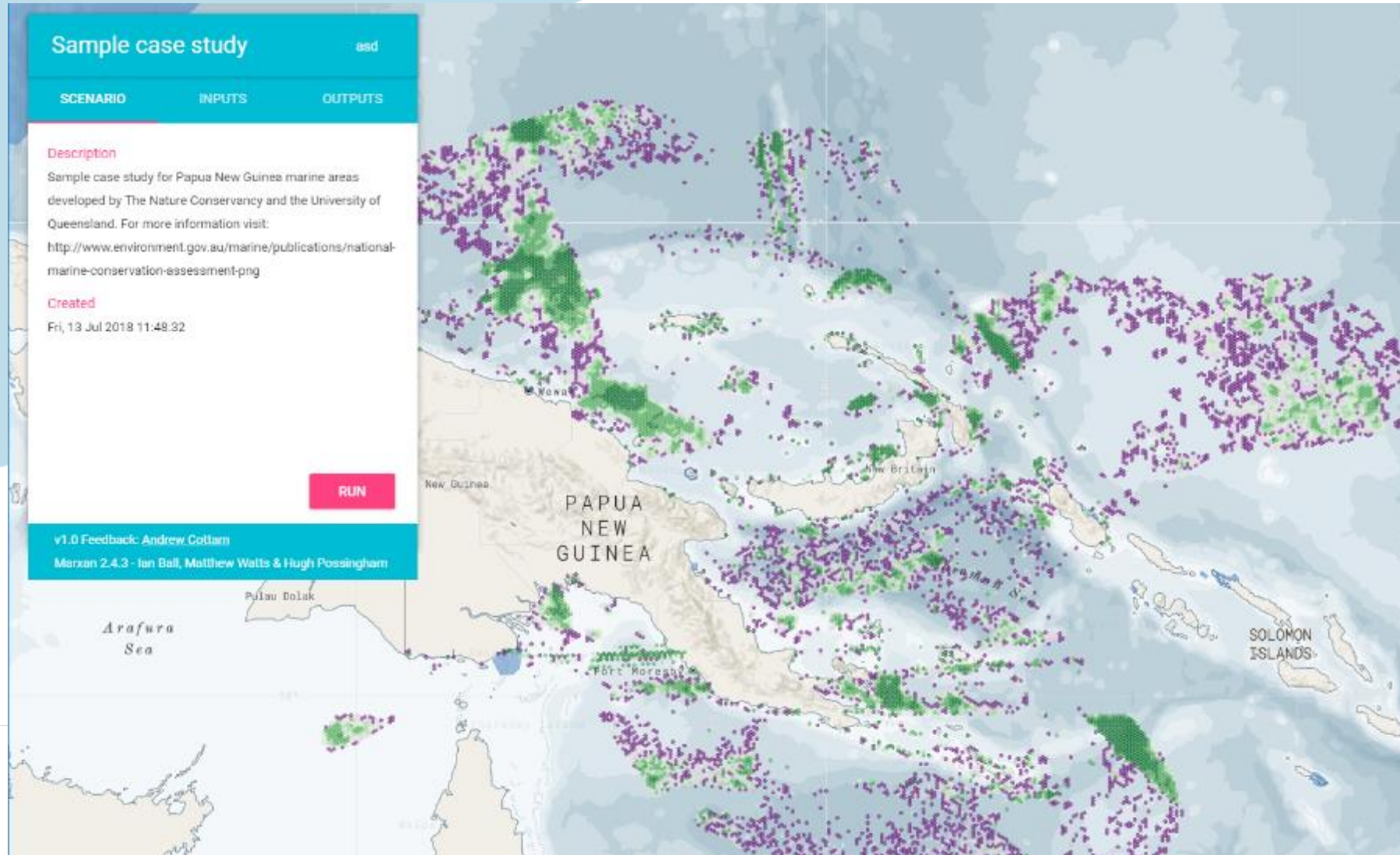
IMET



PA Mapping Tools and Campaigns



Analysis

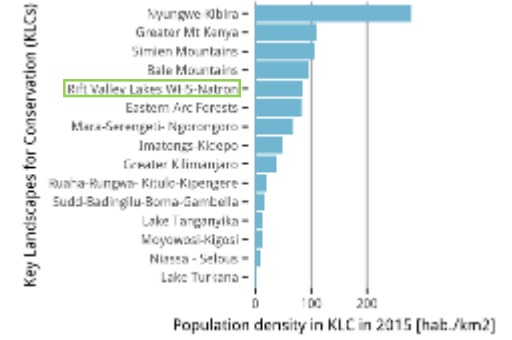
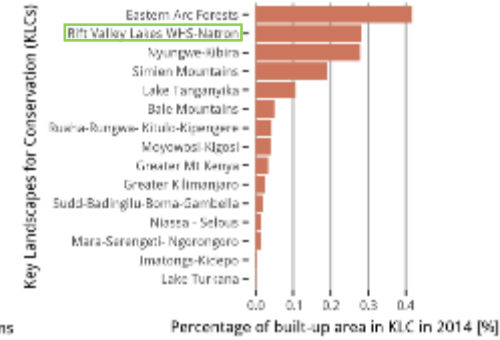
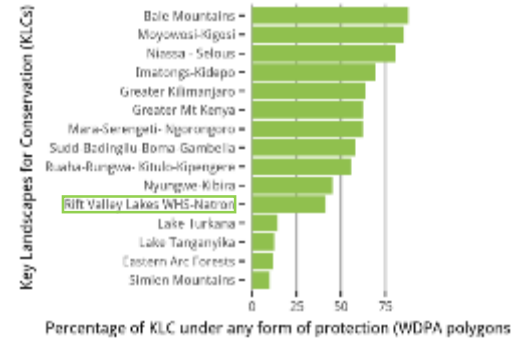


Terrestrial PAs

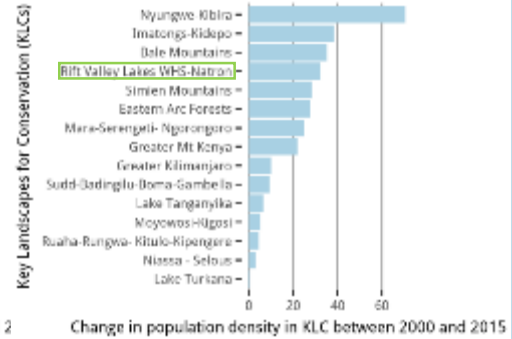
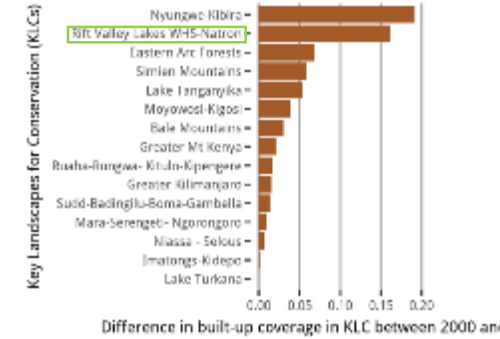
Example KLC: Rift Valley Lakes WHS - Natron

Pressures in Africa's Key Landscapes for Conservation

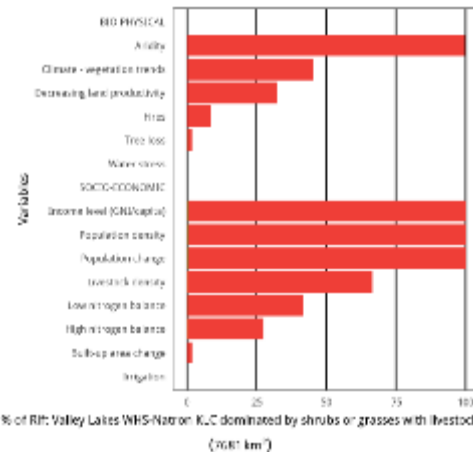
- Aims and scope of tasks
- Visualize and quantify global change issues at KLC level
- Impact and next steps



Comparison to other KLCs in East Africa



Information on global change issues (WAD3)



Other Information

BIOPAMA Eastern & Southern Africa

Bastian Bertzky – Wednesday at 10:14 AM

The National Geographic Society is conducting a brief survey of protected area managers and other protected area professionals in sub-Saharan countries to help inform its strategy for conservation activities in Africa: <https://www.surveymonkey.com/r/G9QG7QC> (Deadline 10 November 2018!)

More information on the last page of the current IUCN PAPACO newsletter: http://papaco.org/wp-content/uploads/2018/11/NAPA_nov_EN.pdf

Expand the Field Survey

www.surveymonkey.com

NAPA_nov_EN.pdf

papaco.org

LIKE REPLY SHARE

Write a reply

BIOPAMA Eastern & Southern Africa

Bastian Bertzky – Tuesday at 9:26 AM

South Africa has released its first ever National Status Report on Biological Invasions - showing that invasive alien species cost the country some US\$450 million a year and are responsible for about a quarter of its biodiversity loss:

<https://www.nature.com/articles/d41586-018-07286-0>
<https://www.sanbi.org/media/the-status-of-biological-invasions-and-their-management-in-south-africa/>

THE STATUS OF BIOLOGICAL INVASIONS AND THEIR MANAGEMENT IN SOUTH AFRICA

News

Title contains Article contains Tagged with:

Choose some options Apply

<p>CMU supports use of geospatial technology to protect marine environment</p> <p>Publication date: 07 November, 2018 Published by: jamaica-gleaner</p>	<p>The Caribbean Maritime University (CMU) is in support of protecting the marine environment through the use of geospatial technology. Associate vice-president of the Faculty of Engineering and Applied Technology at the CMU, Dr Stephen Rhoden, said that the use of technology in underwater exploration can preserve and save marine life.</p> <p>Tagged with: Environment, BIOPAMA_News-ACP</p>
<p>COMMENT: Dewayne Johnson v. Monsanto</p> <p>Publication date: 06 November, 2018 Published by: independent-UG</p>	<p>COMMENT BARBARA NTAMBERWEKI In August 2018, jurors in California, USA, ruled that Roundup, a popular weed killer, was responsible for Mr. Dewayne Johnson's terminal cancer illness. A former groundskeeper, Johnson was awarded US\$289 million in damages for Monsanto's failure to warn a...</p> <p>Tagged with: EnvironmentalProtection, Biotechnology, Ecology, Environment, Agriculture, NuclearMedicine, PublicHealth, maths, FoodSafety, MARS-STAT, BIOPAMA_News-ACP</p>
<p>Barrow calls for more Gambian investment in Tourism</p> <p>Publication date: 06 November, 2018 Published by: thepoint</p>	<p>His Excellency, President Adama Barrow has highlighted the government's policy to encourage more Gambian involvement in the tourism sector in a bid to ensure more benefit for ordinary Gambians. According to him, more Gambian investment in the industry would be in line with the government's plans to...</p> <p>Tagged with: Tourism, Agriculture, BIOPAMA_News-ACP</p>
<p>Namibia aims to fight land degradation</p> <p>Publication date: 06 November, 2018 Published by: namibia</p>	<p>THE environment ministry plans to fight desertification and restore land affected by desertification, droughts and floods by 2020 through sustainable development goals. The ministry is hosting a two-day workshop at a hotel in Windhoek, where delegates from the Democratic Republic of Congo (DRC),...</p> <p>Tagged with: FoodSecurityFoodAid, RegionalPolicy, MillenniumGoals, ClimateChange, Environment, Ecology, BIOPAMA_News-ACP</p>



Des connaissances aux services de tous

Observatoire des forêts d'Afrique Centrale

Découvrez l'Observatoire

Produits

Etat des forêts

Explorer

Produits

Etat des Aires Protégées

Explorer

Outils

Interface Cartographique

Explorer

Outils

Indicateurs Nationaux

Explorer

Outils

Faites vous connaître !

Explorer

BIOPAMA

From Knowledge to Action for a Protected Planet

rris.biopama.org



www.biopama.org

The Biodiversity and Protected Areas Management Programme (BIOPAMA) is an initiative of the ACP Group of States funded by the European Union's 11th European Development Fund.