

BIOPAMA

From Knowledge to Action for a Protected Planet



Action Component in Eastern and Southern Africa

Results, Lessons and Recommendations

*Implementation period:
September 2019 - September 2023*

Table of contents

Overview	3
The BIOPAMA Programme	4
The Programme Strategy	4
BIOPAMA Action Component in Eastern and Southern Africa	5
8 steps of BIOPAMA Grant Mechanism	6
Timeline of the BIOPAMA Action Component in Eastern and Southern Africa	7
Key results	8
Contribution to the Global Biodiversity Framework “30x30” Target	9
Grants Impact based on the Green List Standard and Criteria	10
Grant Allocation	11
Grants Financial Status	12
Grant Coverage	12
Beneficiaries	13
Improved Governance and Management of Protected and Conserved Areas	14
Assessments of Protected and Conserved Areas	14
Enhanced Capacities of Actors	16
Enhanced Social Economic Benefits	17
Improved Systems for Protected and Conserved Areas Monitoring and Patrolling	18
Challenges & recommendations	20
Challenges in Grant Management and Implementation	21
Recommendations for Grant-Making programs and Grant Projects	22

Overview

Overview

The BIOPAMA Programme

The Biodiversity and Protected Areas Management (BIOPAMA) Programme contributes to improving the long-term conservation and sustainable use of biodiversity and natural resources in Africa, Caribbean and Pacific regions in protected areas and surrounding communities through the provision of a variety of tools, services, capacity development and funding to support conservation stakeholders.

BIOPAMA implements a 21 million Euro grant-making facility named BIOPAMA Action Component – financed by the European Union’s 11th European Development Fund. The funding is addressing priorities for action, supporting activities on the ground for strengthening the management effectiveness and governance of protected and conserved areas. By adopting a landscape approach, these actions also contribute to enhancing the local livelihoods through sustainable use of the natural resources and ecosystem services, as well as increasing the resilience to the impacts of climate change.

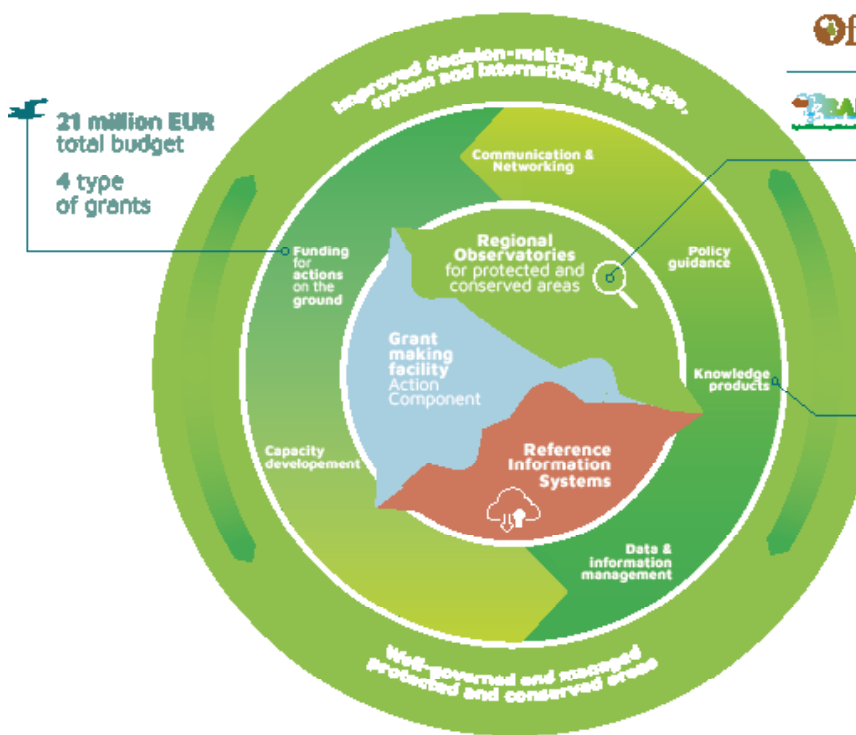
The implementation of the Action Component is one of the major deliverables of the BIOPAMA Programme, together with the consolidation of the Regional Observatories for protected areas and biodiversity and their Reference Information Systems (RIS).

The BIOPAMA Regional Observatories and the RIS provide valuable information, knowledge and

data on the protected and conserved areas in the ACP countries, which have a key role in highlighting where actions on the ground are needed.

The Programme Strategy

From Knowledge to Action in Africa, the Caribbean and the Pacific



- 
The Caribbean Protected Areas Gateway
www.caribbeanprotectedareasgateway.com
- 
The SPREP-PA (Regional Protected Area Support Programme)
www.piap.sprep.org
- 
The Regional Resource Hub for Eastern and Southern Africa
www.esahub.rcmr.org
- 
The Central Africa Forest Observatory
www.observatoire-comifac.net/analytical_platform
- 
The Observatory for Biodiversity and Protected Areas in West Africa
www.obepao.org



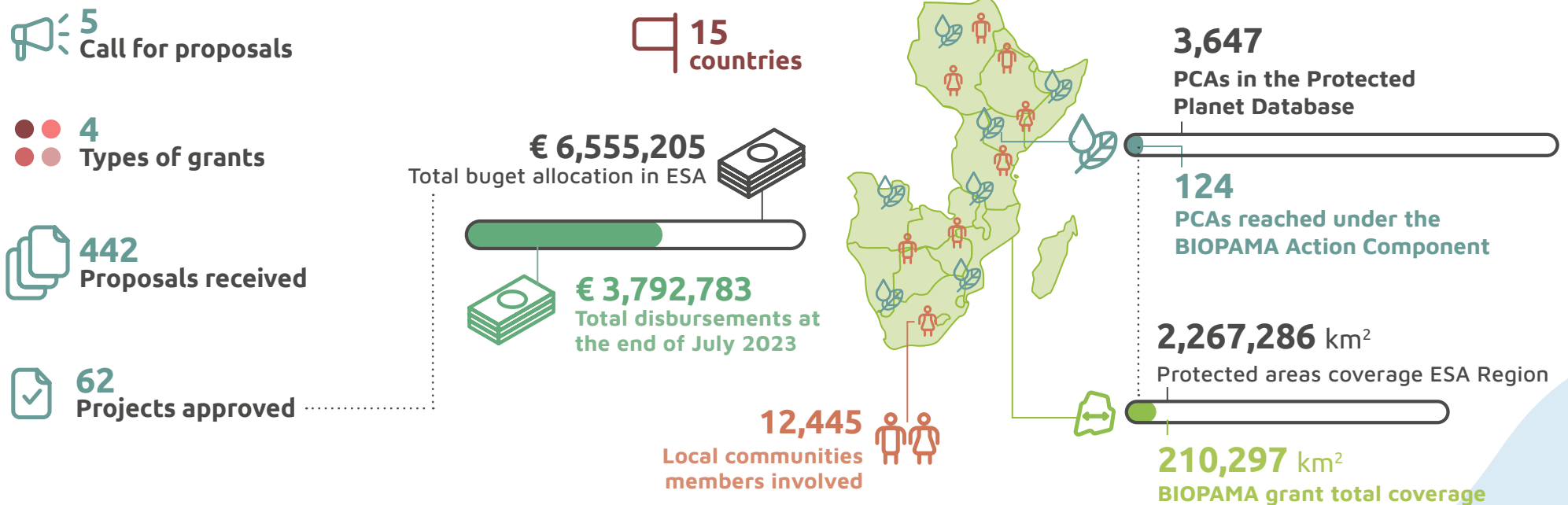
Overview

BIOPAMA Action Component in Eastern and Southern Africa

Goals

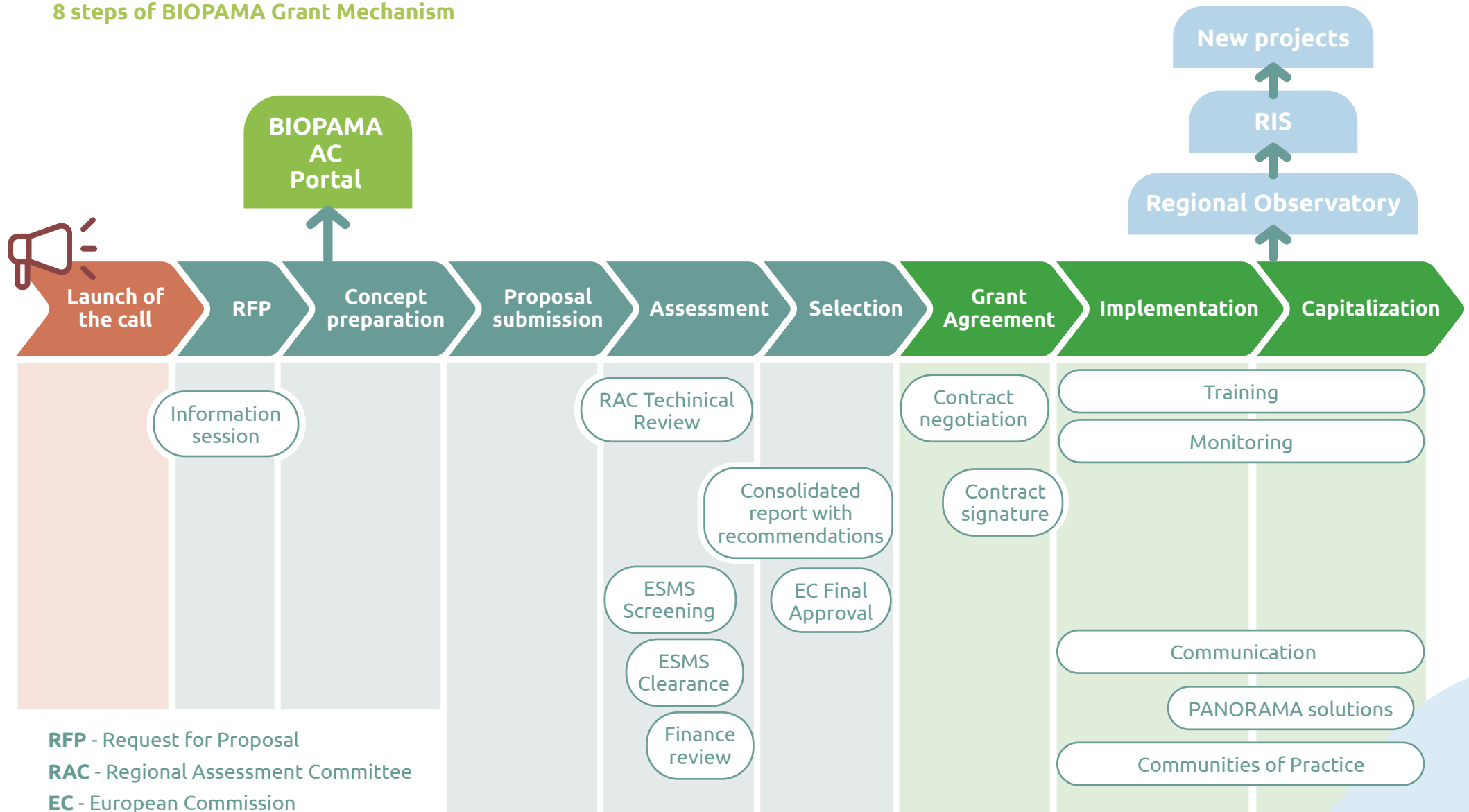
- Enhance the management and governance of priority areas by addressing existing limitations;
- Enforce the legal framework required to achieve effective biodiversity conservation in protected areas;
- Support local communities' initiatives aiming to enhance the livelihoods of local people whilst effectively contributing to protected areas' management.

Results



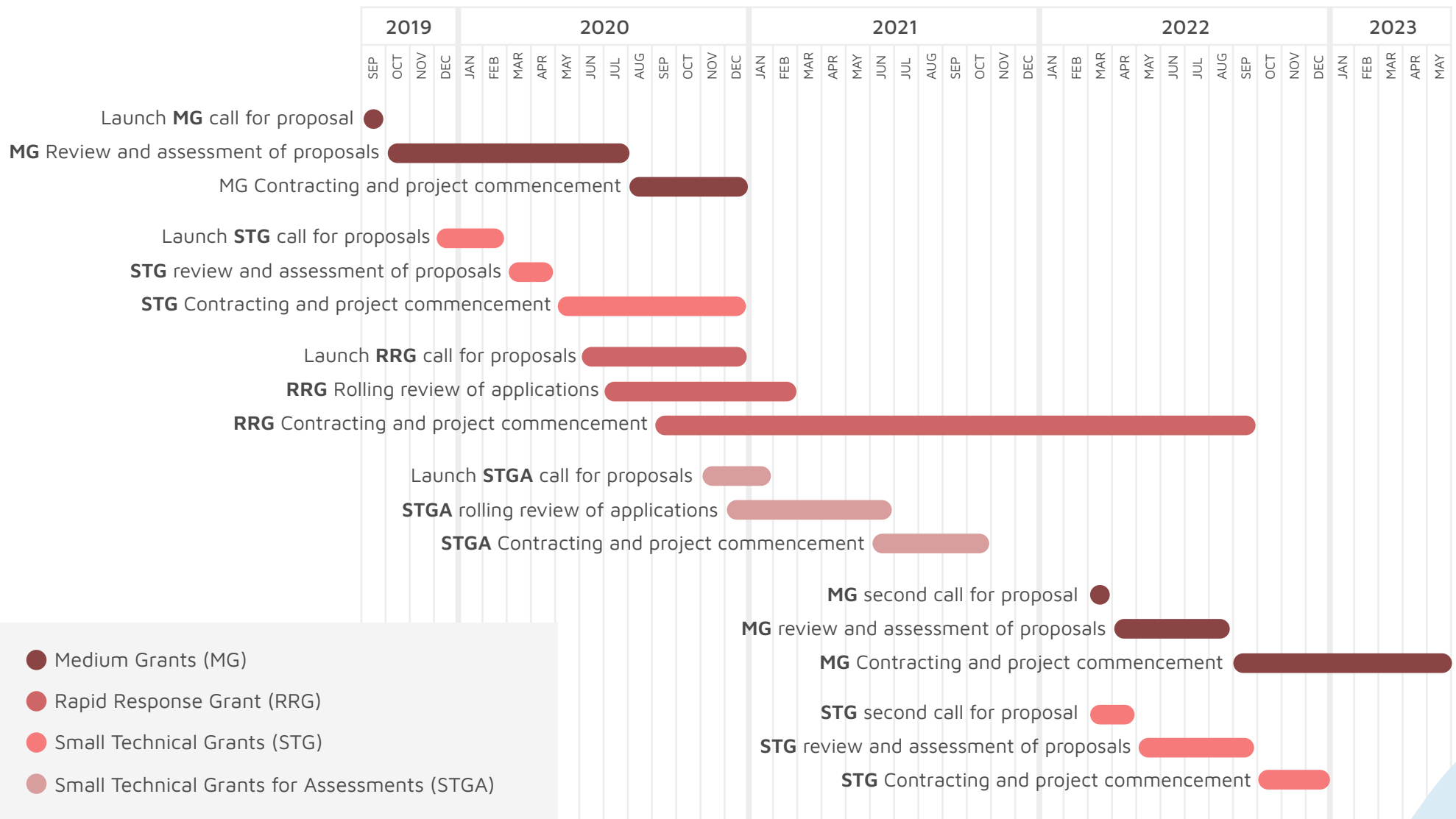
Overview

8 steps of BIOPAMA Grant Mechanism



Overview

Timeline of the BIOPAMA Action Component in Eastern and Southern Africa



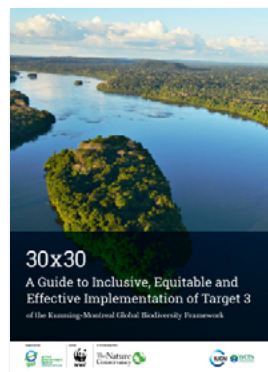
- Medium Grants (MG)
- Rapid Response Grant (RRG)
- Small Technical Grants (STG)
- Small Technical Grants for Assessments (STGA)

Key results

Key results

Contribution to the Global Biodiversity Framework “30x30” Target

Ensure and enable that by 2030 at least 30 per cent of terrestrial and inland water areas, and of marine and coastal areas, especially areas of particular importance for biodiversity and ecosystem functions and services, are effectively conserved and managed through ecologically representative, well-connected and equitably governed systems of protected areas and other effective area-based conservation measures, recognizing indigenous and traditional territories, where applicable, and integrated into wider landscapes, seascapes and the ocean, while ensuring that any sustainable use, where appropriate in such areas, is fully consistent with conservation outcomes, recognizing and respecting the rights of indigenous peoples and local communities, including over their traditional territories.



The BIOPAMA Action Component projects were aimed at improving the governance, ensuring effective planning and management of the protected and conserved areas for improved conservation outcomes, and achievement of a site’s goals and objectives thereby contributing to the 30x30 target.

Key results

Grants Impact based on the Green List Standard and Criteria

To measure the achievement of effectively governed and managed PCAs, IUCN developed a Green List standard which outlines the criterion and generic indicators.

Impact of BIOPAMA Action Component Grants on Improved Governance and Management Effectiveness of PCAs (In relation to the Greenlist Standard and criteria)		
Green List Criterion	Green List Indicators	Result
Guarantee Legitimacy and Voice	• Enhancing participatory planning and decision-making through the Involvement of stakeholders, and communities in management planning, processes, and actions	61 PCAs
	• Promoting Gender Equity through the involvement of women, youths, and vulnerable communities in planning and decision-making	23 PCAs
Achieve Transparency and Accountability	• Developing, implementing, and monitoring grievance Management Mechanisms	2 PCAs
	• Improving Access to Information on Governance and Management	42 PCAs
	• Improving WPDA information and information sharing with RO and RIS	124 PCAs
Enable Governance Vitality and Capacity to Respond Adaptively	• Improving governance of the PCA	32 PCAs
	• Capacity Building the Staff and communities of the PCAs on management effectiveness and governance	144 PCAs
Improvement in the Management Effectiveness of the Protected and Conserved areas		
Develop and Implement a Long Term Management Strategy	• Developing, implementing, and monitoring Management plans	10 PCAs
Effectively and Fairly Enforce Laws and Regulations	• Improving systems for monitoring and patrolling	11 PCAs



Solution

Updating the management plan of Mangabe Reserve and assisting local communities through improving infrastructure and facilities

► [Watch the video](#)



Solution

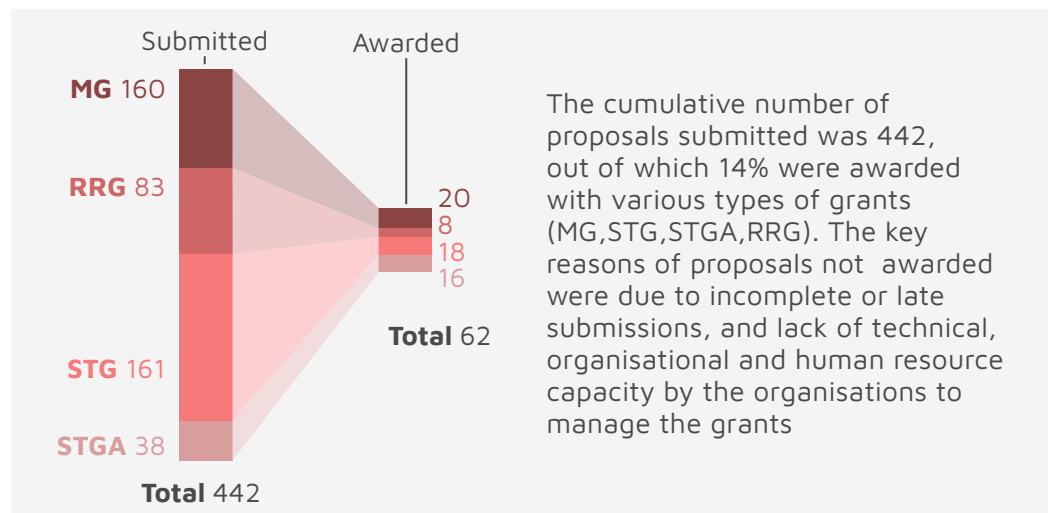
Enhancing Governance and Conservation in biodiversity protected area management

► [Watch the video](#)

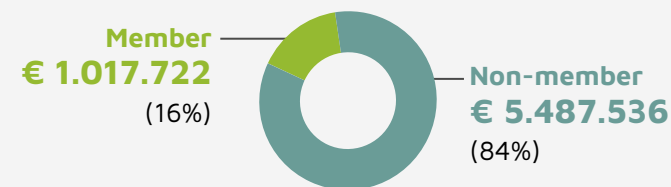
Key results

Grant Allocation

Proposals submitted per grant type



Grant allocation IUCN membership



IUCN works through over 100 members in ESARO (and more than 1,400 members globally), by providing credible and trusted knowledge, convening, and building partnerships for action, sustaining global-to-local and local-to-global reach, and influencing policies, standards, and practice. Through BIOPAMA Action Component, a total of 9 IUCN members were awarded 1,017,722 EUR (16% of the total grant) to implement conservation activities in the region.

Grant allocation per institution categories

	Academic Institution	Government Institution	International NGO	Local NGO	Community based association	National NGO	Grand Total
MG			10	7		3	20
RRG	1	1	1	10	4	1	18
STG	1		1	4		2	8
STGA	4	2	2	2	1	5	16
Total	6	3	14	23	5	11	62

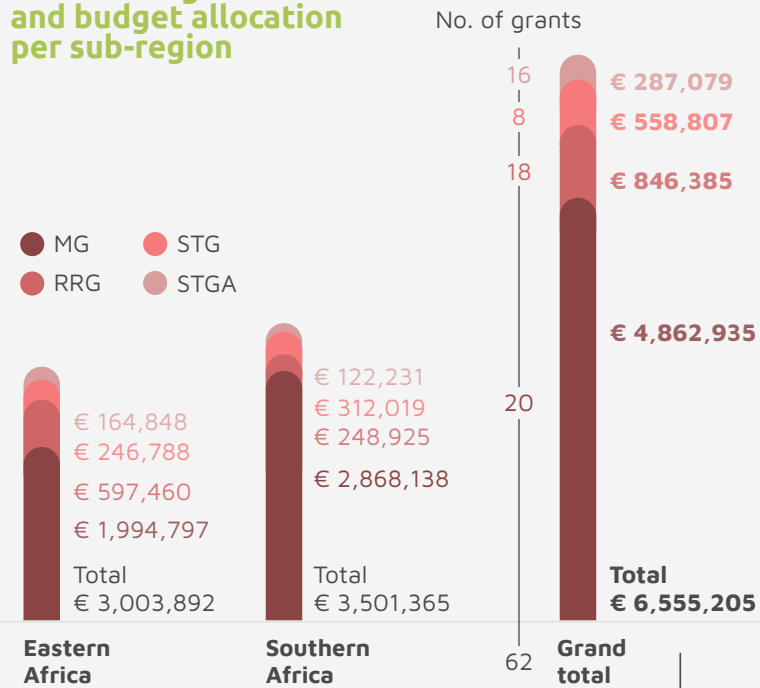
Grant status

	Closed	Ongoing	Terminated	Grand Total
MG	1	19		20
RRG	9	7	2	18
STG	4	4		8
STGA	15		1	16
Total	29	30	3	62

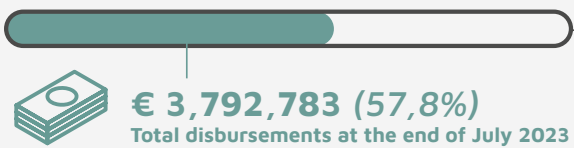
Key results

Grants Financial Status

Number of grants and budget allocation per sub-region

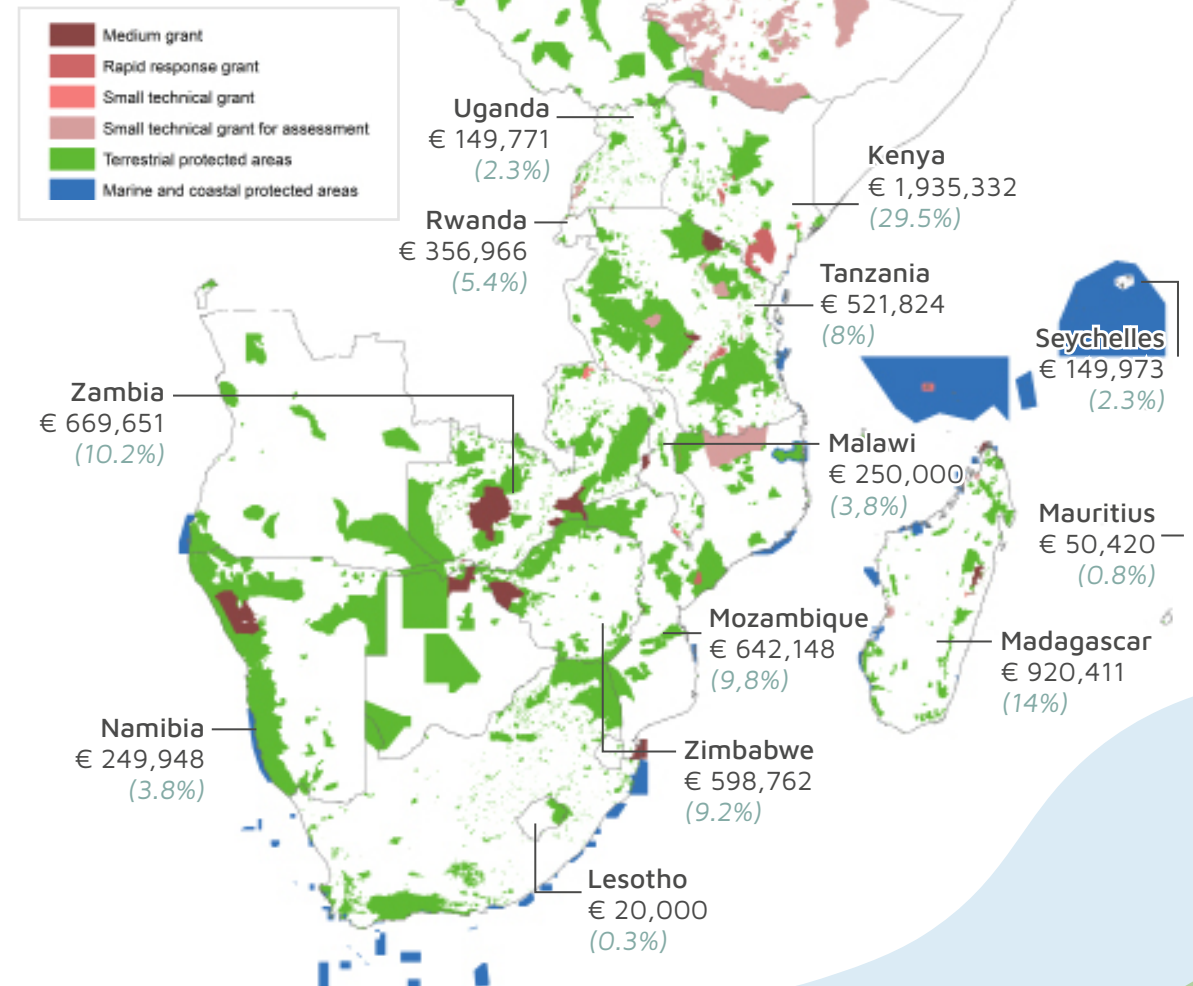


Disbursement rate



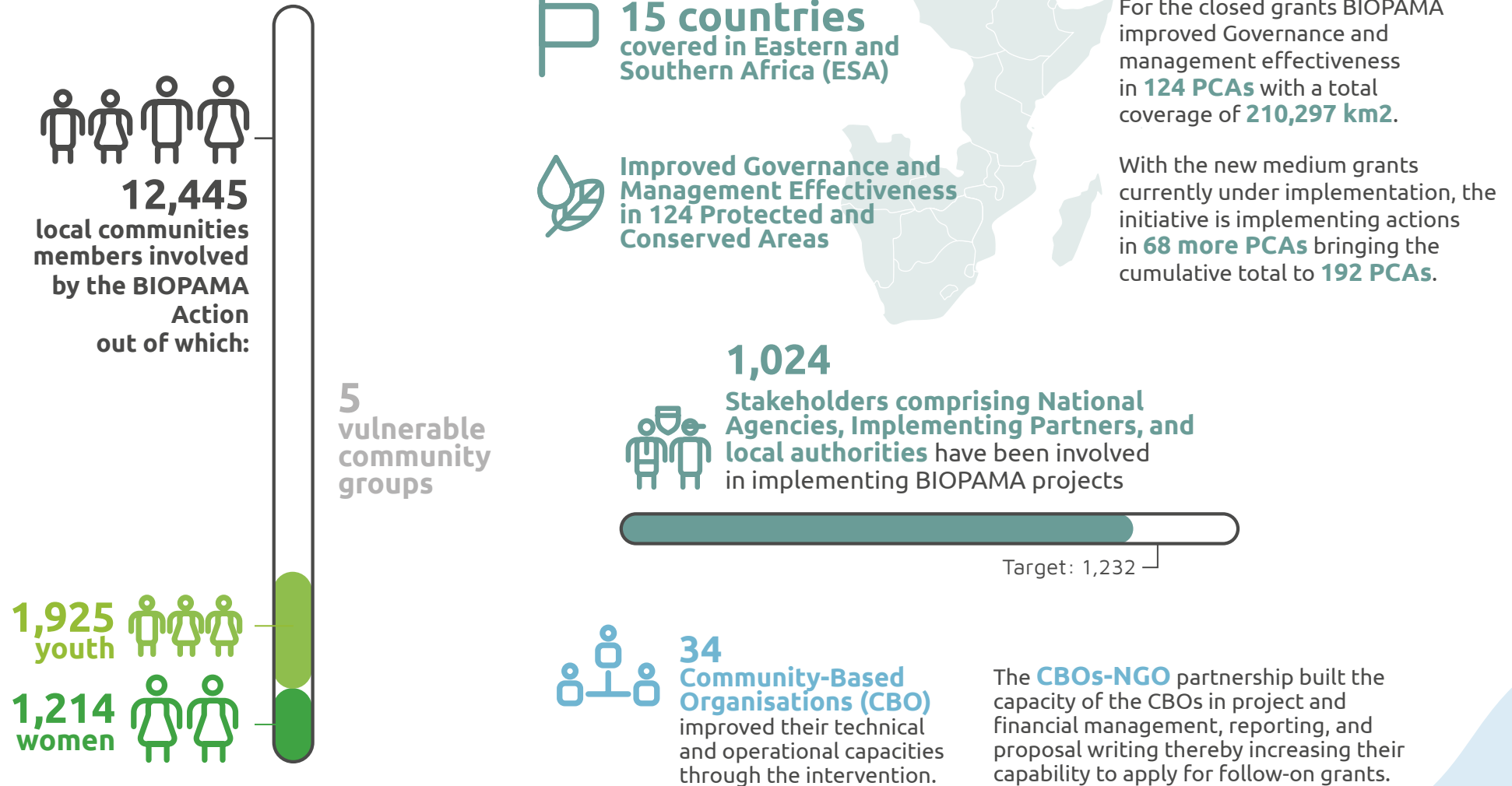
Grant Coverage

Grant allocation per country



Key results

Beneficiaries



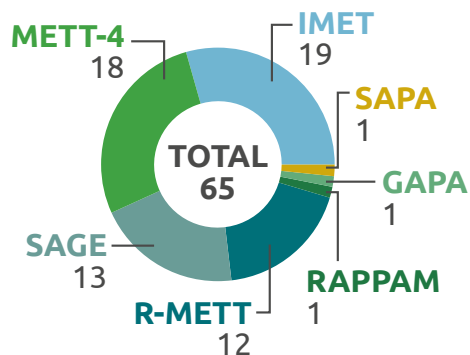
Key results

Improved Governance and Management of Protected and Conserved Areas

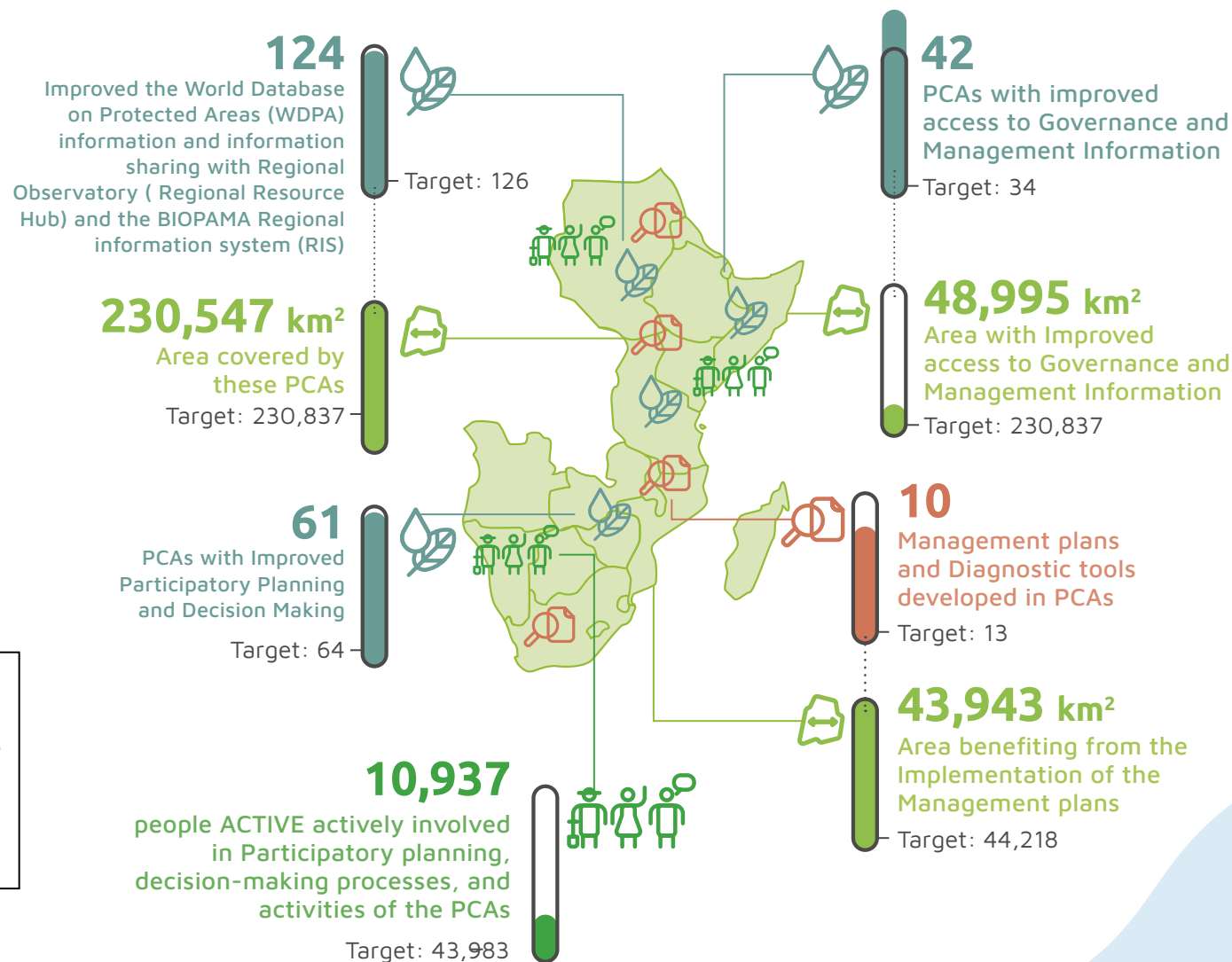
Assessments of Protected and Conserved Areas

65 PCAs have undertaken management effectiveness and governance assessments using different tools.

PAME & PAGE Assessments



IMET - Integrated Management Effectiveness Tool
SAPA - Social Assessment for Protected and Conserved Areas
GAPA - Governance Assessment for Protected and Conserved Areas
RAPPAM - Rapid Assessment and Prioritization of Protected Areas
SAGE - Site Level Assessment of Governance and Equity
METT-4 - Management Effectiveness Tracking Tool
R-METT - Ramsar Site Management Effectiveness Tracking Tool



Key results

Improved Governance and Management of Protected and Conserved Areas

Solution



Site level Assessment of Governance and Equity (SAGE) in Makame and Burunge Wildlife Management Areas (WMAs) located in the Northern part of Tanzania
▶ [Watch the video](#)

Solution



Enhancing Governance and Conservation in biodiversity protected area management
▶ [Watch the video](#)

Solution



Assessment of Governance and Equity of Lumo and Satao Elerai Conservancies for improved conservation and development outcomes
▶ [Watch the video](#)

Solution



Integration of the Batwa cultural values to save world mountain gorillas at Bwindi using GAPA
▶ [Watch the video](#)

Solution



Identifying key biodiversity threats and conservation interventions through management and governance assessment
▶ [Watch the video](#)

Solution



Updating the management plan of Mangabe Reserve and assisting local communities through improving infrastructure and facilities
▶ [Watch the video](#)

Podcast

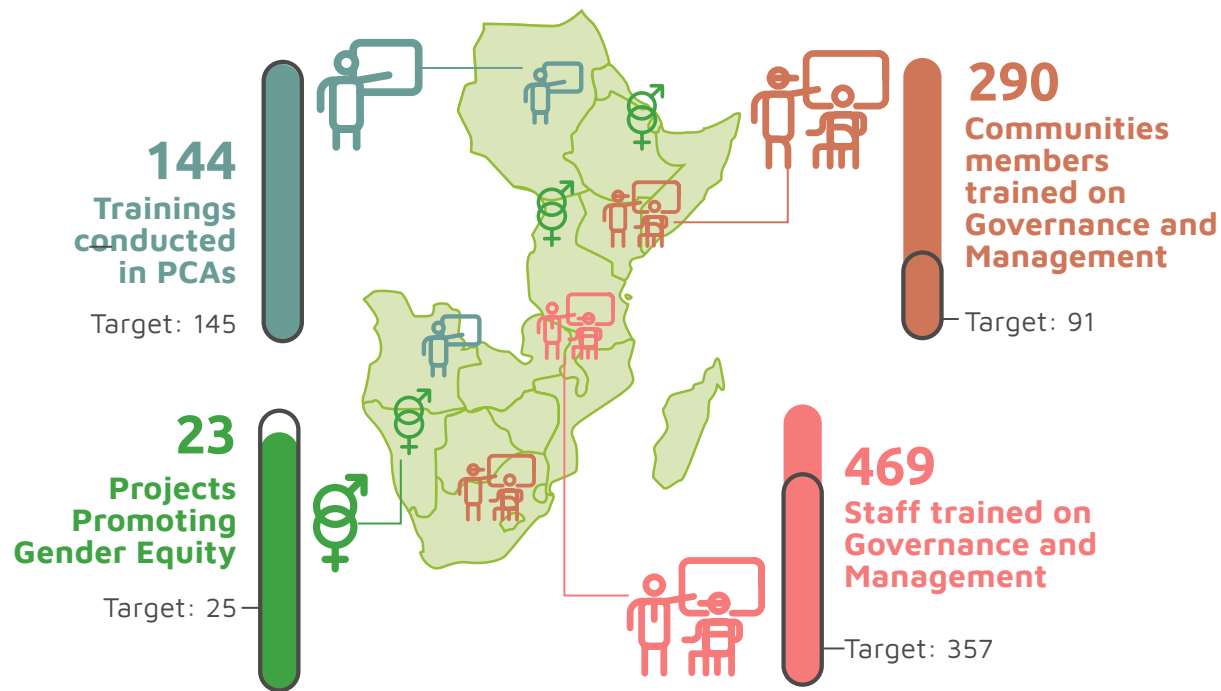


Protected Area Management and Governance

In this episode, you will hear insights and learnings on how protected and conserved area teams and partners have improved management and governance in the areas where they work. We will learn what tools they used to assess management effectiveness and governance and if, and how, these assessments supported decision making such as prioritization of key actions to implement in the protected area.

Key results

Enhanced Capacities of Actors



Solution



Local communities drive vulture conservation initiative across the Kavango-Zambezi Transfrontier Conservation Area: a success story of Zimbabwe, Botswana, and Zambia

[▶ Watch the video](#)

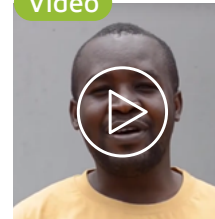
Solution



WIO-COMPAS Assessment: A Mentorship Approach Towards Building MPA Staff Capacity

[▶ Watch the video](#)

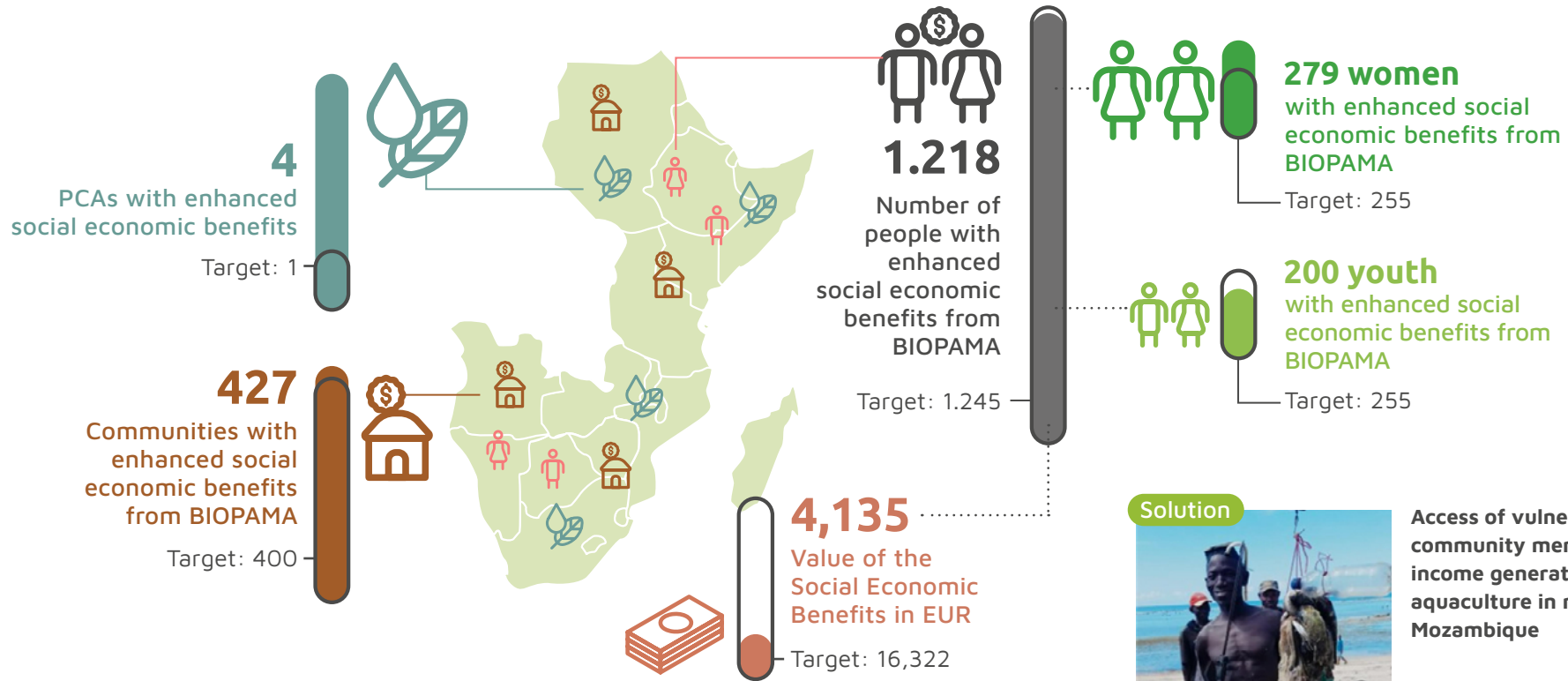
Video



Mafinga Hills Zambia - IMET Assessment Summary

Key results

Enhanced Social Economic Benefits



Solution



Enhancing Community Resilience against the impacts of COVID-19 in the Kamungi Conservancy, Southern Kenya

[▶ Watch the video](#)

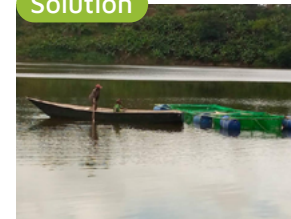
Solution



Eco-Friendly Leather Tanning and Manufacturing as a tool to improve livelihoods for women in pastoral communities of Tanzania and Kenya

[▶ Watch the video](#)

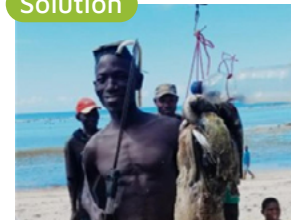
Solution



Improving socio-economic livelihoods of local communities to foster wetland restoration/regeneration and sustainable use of natural resources in Nzuguto community wetland

[▶ Watch the video](#)

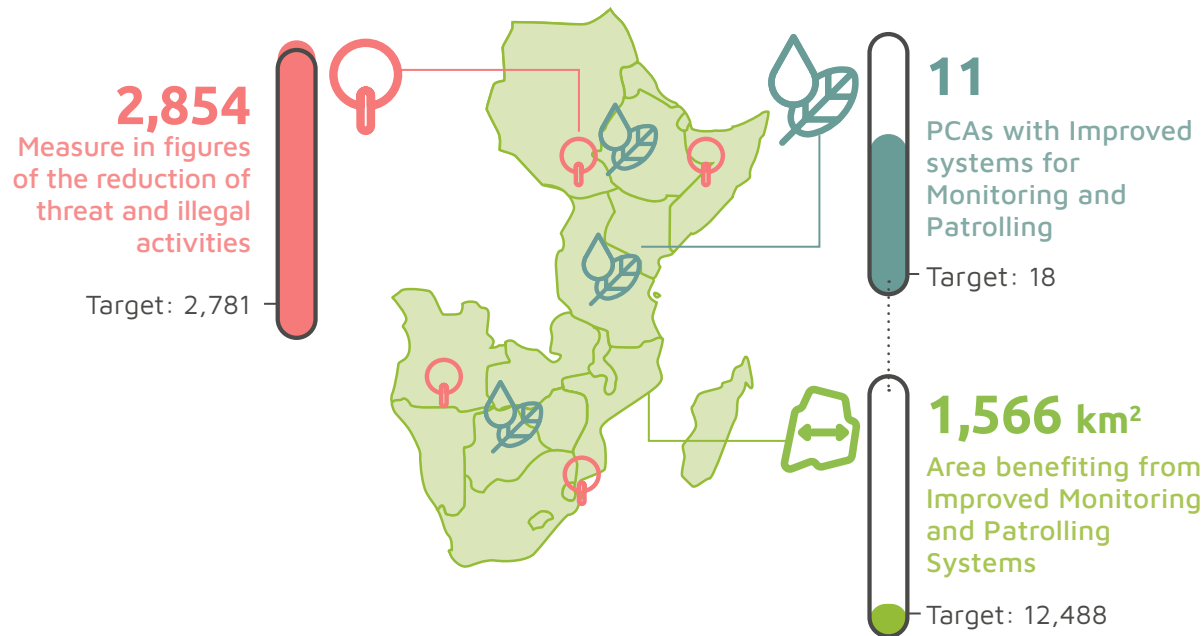
Solution



Access of vulnerable community members to income generating bivalve aquaculture in northern Mozambique

Key results

Improved Systems for Protected and Conserved Areas Monitoring and Patrolling



Solution

Harnessing local knowledge to protect the free roaming black rhinos in the Kunene and Erongo regions of Namibia - let locals fill the boots.

[▶ Watch the video](#)



Solution

Protecting Chumbe Island Nature Reserve from increased poaching threats due to COVID-19 pandemic, through re-assignment of local rangers, skills development of youth fishers, and sustaining its conservation activities

[▶ Watch the video](#)



Solution

Digitising Data Collection for Enhanced Wildlife Management

[▶ Watch the video](#)



Video

Supporting conservation in the Zambezi Delta

Key results

Improved Systems for Protected and Conserved Areas Monitoring and Patrolling

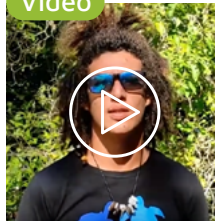
Solution



A lifebelt for Cousin Island Special Reserve MPA

► [Watch the video](#)

Video



Strengthening biosecurity measures to safeguard Aldabra's unique biodiversity (Seychelles)

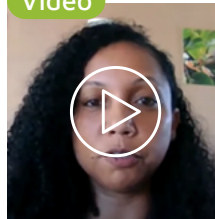
Solution



Enhancing effective management and protection of the Uzungwa Scarp Nature Forest Reserve, a threatened tropical biodiversity hotspot in Tanzania

► [Watch the video](#)

Video



Developing a management plan for Mondrain Reserve (Mauritius)

Podcast



Biodiversity Monitoring and Species Conservation

We'll inform you about biodiversity monitoring and how species conservation interventions are carried out in the field through practical experiences supported by the IUCN programs. We'll showcase examples from different regional contexts and ecosystems while discussing the importance, opportunities, and challenges associated with this key actions to protect our planet.

Challenges & Recommendations

Challenges and recommendations

Challenges in Grant Management and Implementation

KEY CHALLENGES	
A. MANAGEMENT OF THE GRANT MECHANISM	
Call for Proposals	Unbalanced representation of applicants both in type of organisation (58% by NGOs, 23% by Government Agencies and 19% by others) and geographical distribution
Project design and Grant Application	Incomplete/Ineligible submissions by applicants (50% of draft applications were not submitted)
	High admin burden for short term grants
Contract Agreement	Delayed approvals due to stringent internal controls by IUCN and donor
B. GRANT IMPLEMENTATION	
Inception calls	<ul style="list-style-type: none"> • Poor attendance of inception calls • Overwhelming amount of administrative/grant management requirements
Activity Implementation	Activity Implementation delays due to: <ul style="list-style-type: none"> • Administrative delays • COVID-19 restrictions • Natural disasters – droughts, cyclone • Political interference
Finance Management	<ul style="list-style-type: none"> • Delays in financial disbursement by IUCN • Currency changes resulting in losses • Lack of interpretation of the budget from the grantee team • Low Quality/Incomplete financial report submissions by grantees • No flexibility of modifications of the budget • The procurement policies for grantees do not always align with donor organizations
C. GRANT MONITORING, EVALUATION AND COMMUNICATION	
Project Logframe and workplans	Low capacity on log frame and Workplan development
Reporting	Low quality/incomplete report submissions
Communications and visibility	Ineffective Grant Communication

Challenges and recommendations

Recommendations for Grant-Making programs and Grant Projects

The challenges faced during BIOPAMA Action Component implementation from September 2019 to September 2023 were analysed by the programme management team and the grant-recipients alike. These analyses yielded recommendations that will inform prospective grant programmes and will hopefully set the foundation for the design of new grant mechanisms and the implementation of successful projects.

	SHORT TERM - GRANTS FOCUSED	SHORT TO MEDIUM TERM (AID EFFECTIVENESS)	MEDIUM TO LONG TERM (SUSTAINABILITY)
Pre-Award	<ul style="list-style-type: none"> • Deploy a targeted outreach and visibility during the call for proposals. • Build capacity for applicants on the application guidelines and requirements • Simplify the application processes/requirements for small grants. • Establish Realistic timelines for award phase 	<p>Foster cross-project collaboration from the application phase and throughout to ensure geographical coherence, local coordination and enable the conditions to achieve greater impact</p>	<p>Strengthen the nexus and collaboration of AC with the other IUCN grant mechanisms and programs, country offices, members, and commissions for effective grant management</p>
Award	<ul style="list-style-type: none"> • Clarify to the grantee the need for inclusive attendance during the Project inception calls • Mentoring and capacity development of the grantees along entire grant cycle 	<ul style="list-style-type: none"> • Increased capacity in Grant Management Unit at IUCN to manage the grants- By hiring more personnel to support grants • Agile adaptation of grant implementation to respond to external influences and Risks 	<p>Develop, implement, and monitor Key Performance Indicators for effective grant management by the programme team</p>
Grant Monitoring, Evaluation and Communication	<ul style="list-style-type: none"> • Capacity development of the grantees on M&E, reporting and communications tools (workplans, log frames, reporting templates) • Analyse trends based on issues reported by grants management staff and create training resources • Support grants to develop clear communication and Visibility Plans • Use collaboration tools to solicit and collect feedback from grantees, partners, donors for the improvement of the granting mechanism. (grantees surveys, partners annual surveys, etc) • Organise knowledge and experience sharing platforms for the grantees 	<ul style="list-style-type: none"> • Develop training and guidance vidoes and FAQs for common queries such as grant management system, financial templates, guidelines and make them accessible on the resources portal • Grants to allocate dedicated funds to communications • Negotiate less stringent reporting conditions with the donor to reduce the administrative burden on grantees. 	<ul style="list-style-type: none"> • Develop and implement IUCN Grants Management 5YR strategic plan detailing how to effectively award and manage grants, enhance partnerships and ensure effective oversight and accountability • Effectively incorporate feedback, insights, and best practices from donors, partners, and beneficiaries in the design of IUCN porgrams in the future
Financial Management	<ul style="list-style-type: none"> • Identify common grant financial audit findings and provide training to applicants and recipients to prevent and mitigate future issues • Support grantees to ldnety their procurement needs at the beginning of the project and develop individual procurement plans for effective planning and monitoring • The grantees need to set up a team dedicated to financial management, without assigned staff it does not work 	<ul style="list-style-type: none"> • Through tools like Smartsheet and Power BI that allow to visualize financial execution through dashboards, graphics etc. that allow visualization of financial execution, set up dashboards and graphics to assist grantees, IUCN and donor to quickly assess progress 	<ul style="list-style-type: none"> • IUCN and donors to engage on how to simplify financial reporting to ensure maximum efficiency of funds and reportin

BIOPAMA

From Knowledge to Action for a Protected Planet

biopama.org

action.biopama.org



This publication has been produced with support of the 11th EDF.
The contents of this publication are the sole responsibility of
IUCN and can in no way be taken to reflect the views of the
European Union nor of the ACP Group of States.